

Medinah Park District

Winter-Spring 2025

Celebrating



Registration Begins
December 2

Register Online at
[Medinahparks.org](https://www.Medinahparks.org)

Follow Us  



WHY BANK WITH ITASCA BANK & TRUST CO.?

Because we're the kind of bank you can feel comfortable with. The kind of bank you'd be proud to introduce to all your friends.

Because when you choose us, you're choosing:

- An independently owned and operated community bank—we've helped individuals, families and businesses thrive since 1948.
- A personal banking experience designed for your unique needs.
- A direct one-on-one connection to financial expertise.
- A bank that invests in and gives back to the communities we serve.
- A bank that fits your life, not the other way around.

We invite you to connect with us so we can get to know you. Experience true community banking with Itasca Bank & Trust Co.



Itasca Bank & Trust Co.

Together we'll shape the future

Two Convenient Locations

308 West Irving Park Road, Itasca, Illinois 60143
 One East Irving Park Road, Roselle, Illinois 60172
630-773-0350 | itascabank.com



MEMBER
FDIC



Medinah Park District

22W130 Thorndale Avenue, Medinah, Illinois 60157 • Phone 630-893-2560 • www.Medinahparks.org

Medinah Park District



*We are happy to announce our 60th anniversary in 2025!
 Join us in celebrating our parks, events and programs.*

Connolly Recreation Center Winter-Spring Hours

January 1 - May 31, 2025

Administrative Office Hours:
 Monday-Friday 8:30 am-5:00 pm

Facility & Fitness Center Hours:
 Monday-Thursday 7:00 am-9:00 pm
 Friday 7:00 am-8:00 pm
 Saturday 7:30 am-12:00 pm
 Sunday Closed

Recreation Center Closed:
 Dec 25, Jan 1, May 26

Medinah Park District Board Meetings

The public is invited and encouraged to attend all Board meetings. Meetings are held at the Connolly Recreation Center at 7:00 pm on the following dates:

**Wednesdays: Jan 15, Feb 19, Mar 19,
 Apr 16, May 21**

For more information or to get involved with the Park District, please call 630-893-2560. Notices of all public meetings are posted in the entrance vestibule of the Connolly Recreation Center. Please check our website for additional meeting postings or changes.

*Online registration is available 24/7!
 Visit the Park District online at
www.Medinahparks.org*

Board of Park Commissioners

Jean Ott..... President
 John Blankenship Vice President
 Irene Jarocinski Treasurer
 Russell Bean..... Commissioner
 Janan Jarosinski Commissioner

Staff

Administration Department

Steven Muenz (CPRP), Executive Director.....Steven@medinahparks.org
 Maria Piworski (CPRP), Supt. of Finance/HR.....Maria@medinahparks.org

Recreation Department

Jim Huetson (CPRP),
 Superintendent of Recreation & Safety Coordinator.....Jim@medinahparks.org
 Brooks Wogelius, Recreation SupervisorBrooks@medinahparks.org
 Josh Novelli, Recreation SupervisorJosh@medinahparks.org
 Marissa Nowotarski, Early Childhood Instructor.....Marissa@medinahparks.org
 Hope Rapp, Front Office Coordinator.....Hope@medinahparks.org
 Maria Ameneiro, Front Office Coordinator.....Mameneiro@medinahparks.org

Parks Department

Vince DeGrado (CPSI), Superintendent of Parks.....Vince@medinahparks.org
 Dan Touzios (CPSI), Asst. Superintendent of Parks.....Dan@medinahparks.org
 Jeremy Weres, Park Specialist I.....Jeremy@medinahparks.org

*CPRP - Certified Park and Recreation Professional
 CPSI - Certified Playground Inspector*

Program dates are subject to change. Visit us online for the latest information.

Periodical Publication

Winter-Spring 2025
 Medinah Park District
 Tri-Yearly Publication
 Issue #25-1

Key The following abbreviations indicate information pertaining to specific programs or services.

Co-operative Program = C

Parent/Child Program = PC

Program Contacts

The initials below indicate the name of the staff person in charge of each program. Feel free to contact staff with any questions.

Jim Huetson = (JH)
Brooks Wogelius = (BW)
Josh Novelli = (JN)

Mission and Vision Statement

The Mission of the Medinah Park District is to:

- Enhance the Quality of Life of the Park District Community
- Promote Sound and Effective Use of Park District Resources
- Provide Safe and Enjoyable Opportunities
- Preserve and Maintain Open Space

Our Vision Statement:

To consistently deliver a broad range of safe, healthy, educational, inclusive and fun-filled recreational opportunities for our communities, neighbors and guests.

Table of Contents

General Information	3, 41
Registration.....	42
Park and Facility Rentals.....	8
Sledding and Birthday Parties.....	9
Letter from the Executive Director.....	4
Thank You Sponsors & Volunteers.....	5
NEDSRA.....	40
Parks and Facilities Map.....	43
60th Anniversary	6, 7
Special Events	10-13
Summer Camps	14, 15
Preschool	16
Before/After School Care	17
Early Childhood	18, 19
Dance	20, 21
Youth	22-30
Martial Arts	30, 31
Adult	32-35
Adult Trips	36, 37
The Fitness Center/Open Gym	38, 39

Letter from the Executive Director

Dear Medinah Park District Residents,

As we embark on another winter and spring season full of activities, programs and events, the Medinah Park District is thrilled to celebrate a significant milestone - our 60th anniversary! 2025 marks six decades of service, community and growth, and we are grateful to have you as part of our journey.

Since our founding, the Medinah Park District has been dedicated to enriching the quality of life for our residents through exceptional recreation programming, beautiful outdoor spaces and wonderful special events to engage the community. The past 60 years have included cherished memories and experiences for families such as the enjoyment of time spent at the playground at Manary Park, a game of tennis at the Thorndale courts, or the simple pleasure of a walk through Meacham Creek Park.

In honor of our anniversary, we invite you to join us in celebrating all that we've accomplished, as well as looking forward to the new and exciting offerings of the 2025 winter/spring brochure. Throughout these first months of the new year, we will host family events such as visits with Santa to egg hunts with the Easter Bunny. We will offer activities and programs that range from robotics to cooking, and from pickleball to yoga. We encourage you to participate, share your stories, and build new memories.

Thank you for being essential to your community and the Medinah Park District. Here's to the past 60 years, and to many more years of connections and memories!

Warm regards and here's to 60 more!

Steven Muenz
Executive Director
Medinah Park District

Medinah Park District



Thank You To Our Volunteers and Sponsors

The Medinah Park District wishes to express our deep appreciation to those who have volunteered their time and talents and/or sponsored our various programs and special events. We are forever grateful for your commitment to the Medinah community and the Park District. Your support increases opportunities for all Park District patrons.

Volunteers

- Mason Smiedendorf
- Gae Quartararo
- Jessica Quartararo
- Krystian Sobota
- Justyna Sobota
- Marco Partipilo
- Matthew Zachara
- Alyssa Neitzke
- Emma Allen
- Pawel Bobowik
- Angel Acevedo
- Vince DeGrado
- Matt Bishoff
- Megan Bishoff
- David Fazio
- Mike Harris
- Jason Johnson

- Mike Allegretti
- Cara Rushing
- Mary Knudson
- Dusan Kukolj
- Dirk Smith
- Liz Carpenter
- Jason Carpenter
- Hope Rapp
- Paige Unterbrink
- Tressa Johnson
- Steve Johnson
- Julie Metz
- Gabby Palaci
- Bridget Lahart
- Joesph Leli
- Gabriella Palaci
- Jenna Geraci
- Isabella Asenova
- Katie Astrouski
- Fred Bartling

- Jamaica Bends
- Donald Bertini
- Susan Byrns
- Colleen Cline
- Kiyoko Czech
- Anthony DeGrado
- Anthony & Mary Gojda
- Donna Gurak
- Maryann Grygiel
- Cindy Hedgers
- Irene Jaroncinski
- Mary Knudson
- Javarius Lane
- Rena Lauk
- Michael O'Garro III
- Jean Ott
- Maria Reyes
- Jessie Ross
- Mya Ross
- Sebastian Skogsberg
- Lu Anne Smith
- Lori Snyder
- Steven Talaga

- Doris Toher
- Heather Topolewski
- Lora Vodicka
- Craig & Jessica Wogelius
- Kasia Zeranski
- Roselle-Medinah
- Softball-Baseball
- Organization
- Scout Troop 95
- Medinah School
- District PTO

Sponsors

- Flood Brothers Disposal/
- Recycling Services
- Itasca Bank and Trust
- State Farm Agent
- Anthony Degrado
- Red Devils Basketball

Sponsors Invited!

The Medinah Park District invites you to partner with us and connect with an audience that is waiting to meet you!

Learn how to become a sponsor at Medinahparks.org



Learn how you can make a difference by volunteering! Visit Medinahparks.org

Timeline of Medinah Park District 1965-2025

Medinah Park District



Medinah Country Club sets aside public land for the Medinah Park District

First park district structure is built; a windbreak wall and fire pit for the ice skating rink

Park district takes over the maintenance duties at the Metra Train station and currently operates parking procedures for Metra

Added first gymnasium, what is now the Walnut Room

Ice rink moved to present location and is also used as a sand volleyball court during the spring and summer months

Current gymnasium built

Natasha Brandt Nature Preserve and Meacham Creek Wildlife Preserve established

Full rehab of Springhill Park completed

Riha Park OSLAD project. New trail system, backstop, and playground

New permanent park signs for all parks installed

Manary Park Improvements: Backstop, playground, trail system

Thorndale Park OSLAD project completed: New pavilion, beach volleyball courts, new playground

1965 1970s 1980s 1990s 2000s 2010s 2020s

Medinah Park District is formed in the garage of local resident Ruth Hacker

Nordic Park and Glendale Park (Riha Park) were established

Preschool program begins at the Medinah Park District

Meacham Creek Park established

Ceramics program begins

Woodview Park (Goodenough Park) established

Springhill Park established

Family Fest begins as an Ice Cream Social

Major renovations and additions on Thorndale Recreation Center completed. Gym and Walnut Room were existing structures

Fire pit was built in North Thorndale Park as well as small renovation to Pavilion as Eagle Scout projects

Major renovations to Thorndale Recreation Center completed and renaming it Connolly Recreation Center

Goodenough Park Renovation: New tennis, pickleball, and basketball courts, trail system

Thorndale Park Improvements: Trail system, parking lot renovation and tennis court renovation

National Fitness Court installed at Thorndale Park South

Medinah Park District Rentals

Host your next event at the
Medinah Park District!

**Birthday Parties • Baby Showers
Gender Reveal Parties
Staff Events • Bridal Showers
Graduation Parties • Retirement Parties**

**Any other ways that our spaces
can fit your needs!**

Connolly Recreation Center

Gymnasium – 200 person max capacity
\$60/hour Resident, \$75/hour Non-Resident

Walnut Room – 80 person max capacity
\$50/hour Resident, \$65/hour Non-Resident

Maple Room – 40 person max capacity
\$40/hour Resident, \$55/hour Non-Resident

Oak Room – 20 person max capacity
\$30/hour Resident, \$45/hour Non-Resident

Kitchen Use – (refrigerator, microwave, convection oven,
and ice machine)
-\$15 flat fee with rental of any above rooms

Up to 100 chairs and 20 tables are available for all renters.
Set-up of tables and chairs are the responsibility of the renter.

Thorndale Park

Pavilion –
Thorndale Park North – Picnic tables, electricity
Thorndale Park South – Beach volleyball courts, Bags set
\$25/hour Resident, \$40/hour Non-Resident

Fire Pit
\$15/hour Resident, \$30/hour Non-Resident
\$15 flat fee with Pavilion Rental

Athletic Field/Tennis Courts
\$35/hour Resident, \$40/hour Non-Resident

Interested renters should complete and submit a Facility Rental
Application Form. Forms can be found on the Rental page at
www.Medinahparks.org or at the Connolly Recreation Center.

Reservations must be made at least two weeks in advance.
A \$20 non-refundable reservation fee and application is required
to reserve a date and space. Full payment and credit card authorization form are due at least two weeks prior to rental
date. For indoor rentals, a \$20 per hour additional fee will be charged for any rental time outside of Connolly Recreation
Center normal operating hours. Call 630-893-2560 or visit www.Medinahparks.org for more information.



Gymnasium



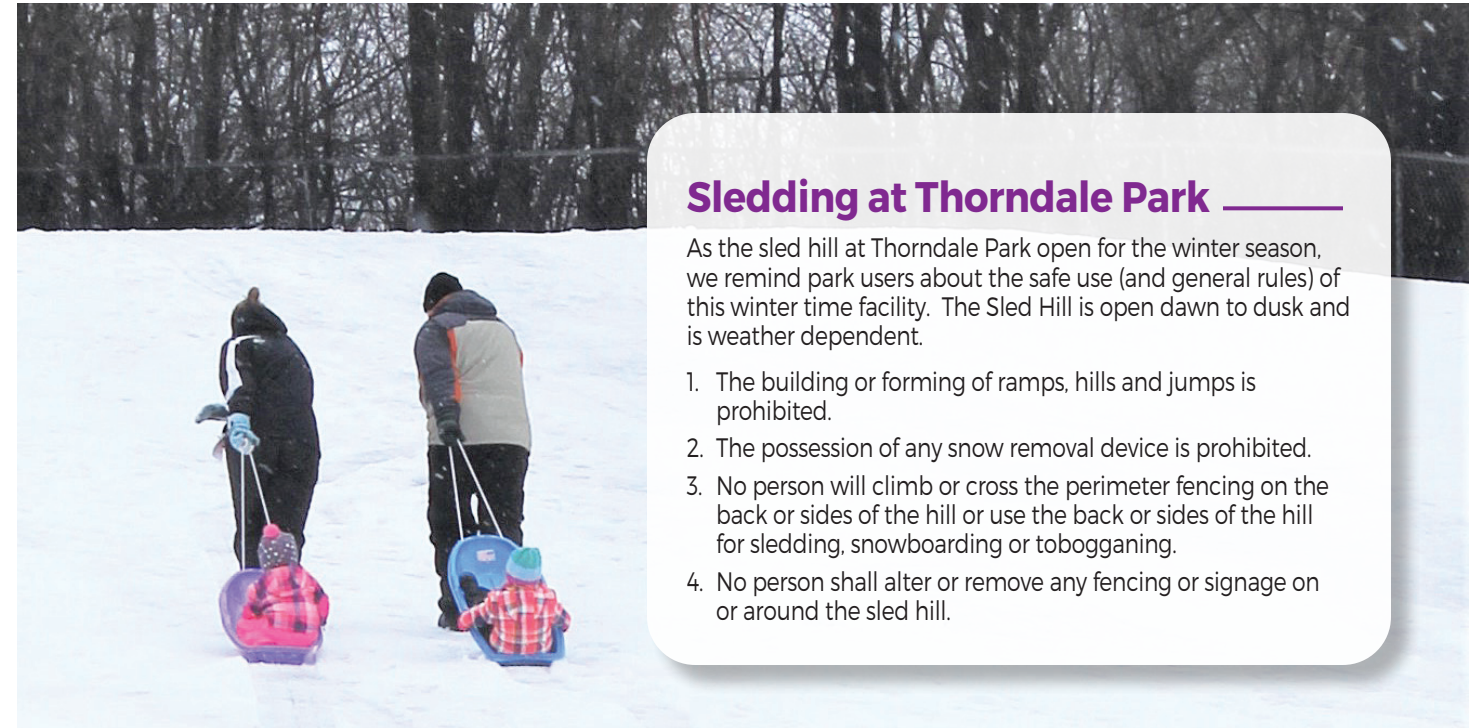
Walnut Room



Maple Room



Oak Room



Sledding at Thorndale Park

As the sled hill at Thorndale Park open for the winter season,
we remind park users about the safe use (and general rules) of
this winter time facility. The Sled Hill is open dawn to dusk and
is weather dependent.

1. The building or forming of ramps, hills and jumps is prohibited.
2. The possession of any snow removal device is prohibited.
3. No person will climb or cross the perimeter fencing on the back or sides of the hill or use the back or sides of the hill for sledding, snowboarding or tobogganing.
4. No person shall alter or remove any fencing or signage on or around the sled hill.

New! Birthday Party Celebrations!

Ages 3-17

Step into a world of endless possibilities and unforgettable memories by hosting your next party at the Medinah Park District, where every moment is infused with excitement and joy. Choose from our captivating themes to transform your event into a one-of-a-kind celebration that will leave your guests dazzled and delighted. Each party includes a dedicated MPD staff member who will lead instruction of exciting games and activities. Also provided will be cutlery, table covers and themed decorations.

Parties are 90 minutes in length. To reserve a party date, please complete and submit a Birthday Party application form. Forms can be found on the Rental page at www.Medinahparks.org or at the Connolly Recreation Center.

Parties must be made at least two weeks in advance. A \$20 non-refundable reservation fee and application is required to reserve a date and space. Full payment and credit card authorization form are due at least two weeks prior to rental date. Call 630-893-2560 or visit www.Medinahparks.org for more information.



Location	Connolly Recreation Center- Walnut Room or Gym
Instructor	Medinah Park District Staff
Fee	\$175(R)/\$190(NR)
Max	15 kids (\$50 for additional children up to 25 total)

-- Party Themes --

- Sports Party • Wacky Games Party
- Dance/Glow Stick Party • Princess Party
- Super Hero Party • Star Wars Party



Santa's Calling

All Ages

**Calls will be made
Thursday, December 19
between 3:45-6:45 pm**

Santa Claus will be reaching out to children to hear their Christmas wishes! To schedule a call with Santa, drop by the Park District between November 25 and December 17, 2024, to complete Santa's "checklist" (one per child), or email Brooks@medinahparks.org to receive Santa's checklist via email.

A Magical Evening w/ the Polar Express Conductor & Friends (BW)

Ages 3-12

**Thursday, December 5
5:30-6:30 pm**

Connolly Recreation Center - Walnut Room
Fee: \$10(R)/\$18(NR) Pre-registration is required
Code: 4040205

The Conductor of the Polar Express, along with Mr. Claus' reindeer-in-training, will make a special visit to the Connolly Recreation Center. Enjoy listening to the timeless tale of the "Polar Express," create holiday crafts, and take photos with the reindeer-in-training.

Cookies and hot chocolate will be provided, but remember the Conductor's most important rule:
never ever let it cool!



Pizza with Santa

All Ages

**Friday, December 13
5:30-7 pm**

Connolly Recreation Center
Fee: \$12(R)/\$18(NR) per person
Children Ages 2 and under have FREE admission
Code: 4080102

The Medinah Park District and Medinah School District #11 PTO have organized a delightful holiday evening for the whole family. Enjoy a visit with Santa and share a pizza meal with him! Be sure to wear warm clothes and boots for our outdoor candy cane hunt before dinner. The evening will also feature photo opportunities with Jolly Old Saint Nick, crafts, activities, music, and a PTO Bake Sale.

Mother Son Fun Night (BW)

Ages 3+ w/ Adult

Treat your favorite guy to an unforgettable evening at our Mother & Son Fun Night! Enjoy a fun-filled evening with delicious food, exciting games, and dancing to beats spun by a live DJ. There will be activities and surprises around every corner, making it a night to remember. Come create special memories and strengthen your bond under the stars. Don't miss out on this wonderful opportunity for quality time and pure enjoyment! If Moms can't make it, Grandmothers and Aunts are more than welcome.

Location Connolly Recreation Center-Gym
Fee \$50(R)/\$65(NR) couple
\$15 additional sibling
Min/Max 25/60 couples

Code	Day	Date	Time
2080110-01	Fri	May 9	6-8 pm
2080110-02	Fri	May 9	6-8 pm (additional sibling)

Registration Deadline: May 6



DADDY DAUGHTER "ENCHANTED FOREST" NIGHT

Ages 3+ w/ Adult

Step into a magical realm where dreams come alive! Join us for a special Daddy-Daughter Night, where the ordinary transforms into the extraordinary in our Enchanted Forest. Let the music guide you as our DJ spins exciting tunes, and indulge in a feast of delectable delights with catered food that's sure to make your evening unforgettable. Dress in your whimsical best and immerse yourselves in a night of fun, laughter, and magical memories. This is one enchanted evening you won't want to miss! If Dads can't make it, Grandfathers and Uncles are more than welcome.

Location Connolly Recreation Center-Gym
Fee \$60(R)/\$75(NR) couple
\$20 additional sibling
Min/Max 25/60 couples

Code	Day	Date	Time
1080100-01	Fri	Feb 21	6-8 pm
1080100-02	Fri	Feb 21	6-8 pm (additional sibling)

Registration Deadline: Feb 19



Reading to a Dog

(BW)
Families

Is your child a fan of reading aloud and dogs? We invite you to join us at the Medinah Park District, where a wonderful opportunity awaits! Plenty of therapy dogs will be on hand, eagerly awaiting the chance to be petted and listen to your child read. Please bring along

your child's favorite book to share with our furry friends. This program promises a heartwarming and literacy-rich environment, where children can enhance their reading skills while bonding with therapy dogs. We look forward to creating memorable moments with your child at this unique and engaging activity! **Pre-registration is required.**

Location	Connolly Recreation Center		
Fee	Free		
Code	Day	Date	Time
1080401-01	Tue	Feb 11	4:30-5:30 pm
1080401-02	Tue	Mar 11	4:30-5:30 pm
2080401	Tue	Apr 8	4:30-5:30 pm

Earth Day Celebration (JH)

FREE Event for All Ages
Saturday, April 26
10:00-11:30 am
Thorndale Park

Join the Medinah Park District for a day celebrating our home, Earth! This free event will feature a park clean-up, planting of native species, ecological demonstrations, earth-themed crafts, music, as well as a recycling drive!



Pickleball Doubles Tournament (JN)

Ages 18+

Grab a partner and join us at the Medinah Park District for our Pickleball Tournament! This is a recreational tournament for players in the range of 1.0-5.0+ skill rating. This tournament will start off with 10 teams in 2 groups playing round-robin games. The top 5 teams of each group will go into single elimination tournament. Prize to winners.

Location Connolly Recreation Center-Gym
Min/Max teams 4/20

Code	Day	Date	Skill Level	Fee Per Team
1060101-01	Wed	Feb 26	1.0-3.0	\$30
1060101-02	Wed	Feb 26	3.5-5.0+	\$30



Medinah 'Tween' Scene (BW)

Grades 3rd-5th

Friday, April 11 - 6-8 pm
Connolly Recreation Center
\$5 at the door

Medinah students come enjoy night full of fun! Activities will include music and open gym. Pizza, pop, and candy will be available for purchase at our concession stand. Parents **must** enter the building to sign participants in and out. Participants will pay at the door. Dress and conduct codes will be enforced.

Medinah Teen Scene (BW)

Grades 6th-8th

Friday, March 14 - 6-8 pm
Connolly Recreation Center
\$5 at the door

During the school year, 6th-8th grade students will take over the Medinah Park Districts' Connolly Recreation Center for an evening of fun and socialization. Activities will include basketball, volleyball, and music. Concessions will be available for purchase. Parents **must** enter the building to sign participants in and out. Participants will pay at the door. Dress and conduct codes will be enforced.

FLASHLIGHT EGG HUNT (BW) PC

Ages 10-14

Thursday, April 17 - 8:30 pm

Thorndale Park

Fee: \$7(R)/\$10(NR) Code: 204015

Peter Cottontail is hopping your way! Join us for an EGG-citing nighttime egg hunt packed with goodies hidden under the moonlight. Don't forget to bring a flashlight, a basket, and dress for the weather! Min/Max 10/30



Bunny Breakfast & Egg Hunt! (BW) PC

All Ages

Saturday, April 19

Egg Hunt and Doggie Egg Hunt are FREE events!

Troop 95 Breakfast:

Fee: \$7(R)/9(NR) per person Code: 2080170
Children Ages 2 and younger FREE

Join us for our annual Easter Egg Hunt celebration! Bring your basket to collect eggs and surprises, and you might even discover one of our special prize eggs. We've set up designated areas for different age groups to ensure everyone has a great time. Don't forget your camera to capture adorable moments with the Easter Bunny!

Once the kids have gathered their eggs, bring along your family's best friend for their own egg hunt filled with doggie treats, and snap a quick photo with the Easter Bunny as well. Please remember to clean up after your pets—baggies will be provided for your convenience. All dogs must be leashed at all times.

Before and after the egg hunts, enjoy an "all you can eat" Pancake Breakfast in our gym, courtesy of Scouting America Troops 95. We'll have pancakes, sausage, coffee, hot tea, milk, and orange juice. We look forward to seeing you there!



Scouting America Troop 95 Breakfast
8-11 am
Connolly Recreation Center
Gymnasium

Egg Hunt
10 am
Thorndale Park



Doggie Egg Hunt
Dogs w/ owners
10:15 am
Thorndale Park

Summer Fun Camp (BW)

Entering Grades K-6th

School's out and summer is here! Sign up for the Medinah Park District's popular summer camp, where your child is sure to have a spectacular time. We're committed to delivering the ultimate camp experience, and your fee covers a host of exciting features. Our 10-week program will include weekly off-site field trips, engaging guest speakers, fun activities, crafts, and plenty of free play. Be sure to dress comfortably, as most of the camp is outdoors. Campers will be grouped by their upcoming grade level: K-2nd grade and 3rd-6th grade. Please bring a backpack every day with a lunch, snack, water bottle, sunscreen and bug spray.

Location	Connolly Recreation Center/Thorndale Park
Instructor	MPD Staff
Fee	\$200(R)/\$215(NR) weekly \$160(R)/\$175(NR)** July 4th week \$1,900(R)/\$2,050(NR)* full camp
Min/Max	10/30 (per age group)



Cubbie Summer Fun (Entering Grades K-2)

Code	Day	Date	Time
3040200-01	Mon-Fri	Jun 2-Aug 8*	9 am-4 pm
3040200-02	Mon-Fri	Jun 2-6	9 am-4 pm
3040200-03	Mon-Fri	Jun 9-13	9 am-4 pm
3040200-04	Mon-Fri	Jun 16-20	9 am-4 pm
3040200-05	Mon-Fri	Jun 23-27	9 am-4 pm
3040200-06	Mon-Fri	Jun 30- Jul 3**	9 am-4 pm
3040200-07	Mon-Fri	Jul 7-11	9 am-4 pm
3040200-08	Mon-Fri	Jul 14-18	9 am-4 pm
3040200-09	Mon-Fri	Jul 21-25	9 am-4 pm
3040200-10	Mon-Fri	Jul 28-Aug 1	9 am-4 pm
3040200-11	Mon-Fri	Aug 4-8	9 am-4 pm

No Camp: Jul 4

Off-Site Field Trips are on Wednesdays. The following locations are tentative.

Urban Air, Safari Springs Waterpark, Funway, Santa's Village, Schaumburg Sports Center, Classic Cinemas Theater, Bowlero, Schaumburg Boomers Game, Coral Cove Water Park, Philips Park Zoo

Grizzly Summer Fun (Entering Grades 3-6)

Code	Day	Date	Time
3040201-01	Mon-Fri	Jun 2-Aug 8*	9 am-4 pm
3040201-02	Mon-Fri	Jun 2-6	9 am-4 pm
3040201-03	Mon-Fri	Jun 9-13	9 am-4 pm
3040201-04	Mon-Fri	Jun 16-20	9 am-4 pm
3040201-05	Mon-Fri	Jun 23-27	9 am-4 pm
3040201-06	Mon-Fri	Jun 30-Jul 3**	9 am-4 pm
3040201-07	Mon-Fri	Jul 7-11	9 am-4 pm
3040201-08	Mon-Fri	Jul 14-18	9 am-4 pm
3040201-09	Mon-Fri	Jul 21-25	9 am-4 pm
3040201-10	Mon-Fri	Jul 28-Aug 1	9 am-4 pm
3040201-11	Mon-Fri	Aug 4-8	9 am-4 pm

Extended Summer Camp

Entering Grades K-6

The extended camp dates are subject to change once the Medinah School District #11 confirms their 2025-2026 school year schedule.

Location	Connolly Recreation Center/Thorndale Park
Instructor	MPD Staff
Fee	\$50(R)/\$65(NR) per day
Min/Max	10-20

Code	Day	Date	Time
3040200-12	Mon	Aug 11	7 am-6 pm
3040200-13	Tue	Aug 12	7 am-6 pm
3040200-14	Wed	Aug 13	7 am-6 pm

Counselor-In-Training

Ages 12-14.5

Are you a teen who wants to have fun as a camper while also gearing up for your first job? Check out our Counselor-In-Training program! This program offers a great chance to develop leadership skills, learn about behavior management, improve communication, and make decisions alongside your fellow campers and counselors. You'll help with tasks like preparing crafts, leading activities, and more! **By signing up, you'll remain enrolled as a camper and will need to complete the required parent manuals.**

Location	Connolly Recreation Center/Thorndale Park
Fee	\$800(R)/\$815(NR)

Code	Day	Date	Time
3050204	Mon-Fri	Jun 2-Aug 8	9 am-4 pm

Please contact Brooks Wogelius at Brooks@medinahparks.org for more information.

Summer Fun Before & After Camp Care (BW)

Entering Grades K-6

For working parents, Before & After Camp Care offers care for campers beyond the normal camp day. Hours are 7-9 am for Before Care and 4-6 pm for After Care. Register weekly for the Before & After Camp Care. You must be enrolled in Summer Fun 2025 Camp to take advantage of this service.

Location	Connolly Recreation Center
Instructor	MPD Staff

Before & After Camp Care

Fee	\$80(R)/\$95(NR) - weekly \$64(R)/\$79(NR)** - July 4th week \$700(R)/\$850(NR)* - 10 weeks
------------	---

Min/Max	Code	Day	Date	Time
5/10	3040204-01	Mon-Fri	Jun 2-Aug 8*	7-9 am / 4-6 pm
	3040204-02	Mon-Fri	Jun 2-6	7-9 am / 4-6 pm
	3040204-03	Mon-Fri	Jun 9-13	7-9 am / 4-6 pm
	3040204-04	Mon-Fri	Jun 16-21	7-9 am / 4-6 pm
	3040204-05	Mon-Fri	Jun 23-27	7-9 am / 4-6 pm
	3040204-06	Mon-Fri	Jun 30-Jul 3**	7-9 am / 4-6 pm
	3040204-07	Mon-Fri	Jul 7-11	7-9 am / 4-6 pm
	3040204-08	Mon-Fri	Jul 14-18	7-9 am / 4-6 pm
	3040204-09	Mon-Fri	Jul 21-25	7-9 am / 4-6 pm
	3040204-10	Mon-Fri	Jul 28-Aug 1	7-9 am / 4-6 pm
	3040204-11	Mon-Fri	Aug 4-8	7-9 am / 4-6 pm



Lil' Critters Summer Fun Camp (BW)

Ages 2.5-5

This 10-week pre-k camp features a variety of exciting activities, including games, crafts, guest speakers, music playtime, and more. It's the perfect opportunity for your child to boost their social skills and get ready for the upcoming preschool year. Please dress your child in comfortable clothing, as we will be engaging in both indoor and outdoor activities. *Note that if your child is not yet potty-trained, our staff will be unable to assist with diaper changes and will contact you if a change is needed.* Don't forget to pack a lunch and a water bottle each day. We look forward to offering a fun and enriching summer experience for your child!

Location	Connolly Recreation Center-Carol A. Healy Early Childhood Room/Thorndale Park
-----------------	---

Instructor	MPD Staff
Fee	\$100(R)/\$115(NR) weekly \$900(R)/\$115(NR)* full camp \$80(R)/\$95(NR)** July 4th week

Min/Max	5/12
----------------	------

Before Camp Care

Fee	\$45(R)/\$60(NR) weekly \$36(R)/\$51(NR)** - July 4th week \$350(R)/\$500(NR)* - 10 weeks
Min/Max	5/10

Code	Day	Date	Time
3040202-01	Mon-Fri	Jun 2-Aug 8*	7-9 am
3040202-02	Mon-Fri	Jun 2-6	7-9 am
3040202-03	Mon-Fri	Jun 9-13	7-9 am
3040202-04	Mon-Fri	Jun 16-21	7-9 am
3040202-05	Mon-Fri	Jun 23-27	7-9 am
3040202-06	Mon-Fri	Jun 30-Jul 3**	7-9 am
3040202-07	Mon-Fri	Jul 7-11	7-9 am
3040202-08	Mon-Fri	Jul 14-18	7-9 am
3040202-09	Mon-Fri	Jul 21-25	7-9 am
3040202-10	Mon-Fri	Jul 28-Aug 1	7-9 am
3040202-11	Mon-Fri	Aug 4-8	7-9 am

After Camp Care

Fee	\$45(R)/\$60(NR) - weekly \$36(R)/\$51(NR)** - July 4th week \$350(R)/\$500(NR)* - 10 weeks
Min/Max	5/10

Code	Day	Date	Time
3040203-01	Mon-Fri	Jun 2-Aug 8*	4-6 pm
3040203-02	Mon-Fri	Jun 2-6	4-6 pm
3040203-03	Mon-Fri	Jun 9-13	4-6 pm
3040203-04	Mon-Fri	Jun 16-21	4-6 pm
3040203-05	Mon-Fri	Jun 23-27	4-6 pm
3040203-06	Mon-Fri	Jun 30-Jul 3**	4-6 pm
3040203-07	Mon-Fri	Jul 7-11	4-6 pm
3040203-08	Mon-Fri	Jul 14-18	4-6 pm
3040203-09	Mon-Fri	Jul 21-25	4-6 pm
3040203-10	Mon-Fri	Jul 28-Aug 1	4-6 pm
3040203-11	Mon-Fri	Aug 4-8	4-6 pm

Code	Day	Date	Time
3020203-01	Mon-Fri	Jun 2-Aug 8*	9 am-12:30 pm
3020203-02	Mon-Fri	Jun 2-6	9 am-12:30 pm
3020203-03	Mon-Fri	Jun 9-13	9 am-12:30 pm
3020203-04	Mon-Fri	Jun 16-20	9 am-12:30 pm
3020203-05	Mon-Fri	Jun 23-27	9 am-12:30 pm
3020203-06	Mon-Fri	Jul 30-Jul 3**	9 am-12:30 pm
3020203-07	Mon-Fri	Jul 7-11	9 am-12:30 pm
3020203-08	Mon-Fri	Jul 14-18	9 am-12:30 pm
3020203-09	Mon-Fri	Jul 21-25	9 am-12:30 pm
3020203-10	Mon-Fri	Jul 28-Aug 1	9 am-12:30 pm
3020203-11	Mon-Fri	Aug 4-8	9 am-12:30 pm

Guest speakers & organizations scheduled to visit the camp are as follows but are subject to change: Roselle Police & Fire Department, Roselle Public Library, Rock 'n' Kids, Sports R Us, and Chicagoland Therapy Dogs.



Little Scholars: **Preschool 2025-2026** (BW)

The Medinah Park District Preschool program provides a welcoming, secure, and enjoyable setting for your child's learning journey. With a semi-structured approach, we emphasize socialization, self-confidence, fine and gross motor skills, and readiness for pre-kindergarten and kindergarten. Children will develop these skills at their own pace through play, crafts, stories, songs, and special activities. Our primary goal is to foster a love of learning and a positive attitude toward school.

Registration must be done in person and proof of age is required. **A \$30 non-refundable deposit is required at time of registration for the 2025-26 school year.** Registration fees are paid in monthly payments during the year (see payment schedule below).

Location Connolly Recreation Center-Carol A. Healy Early Childhood Room
Instructor Marissa Nowotarski

Age 3 & 4 years (3 days a week)
Fee \$177 per month (R)/ \$192 per month (NR)
Min/Max 6/12

Code	Day	Date	Time	Age
4030301	Mon/Wed/Fri	Aug 18-May 15, 2026	9:00-11:30 am	3
4030302	Mon/Wed/Fri	Aug 18-May 15, 2026	9:00-11:30 am	4

Age 3 & 4 years (5 days a week)
Fee \$227 per month (R)/ \$242 per month (NR)
Min/Max 6/12

Code	Day	Date	Time	Age
4030303	Mon-Fri	Aug 18-May 15, 2026	9:00-11:30 am	4

Monthly payments will automatically be charged the third Monday of each month from August 2025 to April 2026.

SAVE THE DATE Medinah Park District Preschool Open House

**Tuesday, February 18
 5:30-7:30 pm.**

We would love for your child to meet and greet Mrs. Marissa and get a feel for the classroom and curriculum at our Winter Open House.

If you are interested in attending, please email Brooks Wogelius, Brooks@medinahparks.org or Marissa Nowotarski Marissa@medinahparks.org.

Little Scholars: Early Childhood Enrichment (BW) Ages 2-3

This program is perfect for children who aren't quite ready for preschool, but are eager for social interaction away from parents. Through songs, stories, shapes, and playtime, your child will enhance their social skills while exploring, discovering, and learning in a fun environment. They'll gain confidence in a "school" setting. Pull-ups are allowed, but a parent or caregiver must be available for any necessary changes. **A \$30 non-refundable deposit is required at time of registration for the 2025-26 school year. Monthly payments will automatically be charged the third Monday of each month from August 2025 to April 2026.**

Location Connolly Recreation Center-Walnut Room
Instructors Marissa Nowotarski
Fee \$145 per month(R)/\$160 per month (NR)
Min/Max 5/12

Code	Day	Date	Time
4020301	Mon/Wed/Fri	Aug 25-May 22, 2026	9:00-11:00 am

Before/After School Care "Power Through" (BW)

Entering Kindergarten-5th Grade

Medinah Park District (in cooperation with Medinah School District #11) offers "Power Through" Before/After School Care to Medinah residents. The program is available for students attending Medinah Primary School and Medinah Intermediate School. The program will be held in the gym and/or classrooms at Medinah Primary School. Transportation to and from the appropriate schools will be provided by school bus. Program hours are 6:30 am until school begins and from the end of school until 6 pm.

Our goal is to provide a safe, fun, friendly, inclusive, and structured before and after school environment. The program will encourage a balance of healthy minds, bodies and personal growth/development through activities. The program will encourage participants through scheduled activities to achieve this balance.

"Power Through" Before/After School Care will follow the Medinah School District #11 days off. Medinah Park District will offer School Days off programs that are not included in the Before/After School Care Fee. There will be a separate registration and fee for the School Days Off Programs.

Payment information: Payments are divided equally among the months with days off in consideration. When registering for Before/After School Care, please be aware that you are registering for the whole school year. A payment form will be distributed before payment due date to participant/parent. **A \$30 non-refundable fee is required.**

***Monthly payments will automatically be charged the second Monday of each month from January to April, 2025**

Before Care: \$220 per month
After Care: \$310 per month
Before & After Care: \$483 per month

Location Medinah Primary School-Gym/Classrooms
Instructor MPD Staff
Min/Max 10/25

Code	Day	Date	Time
4040301	Mon-Fri	Jan 6 -May 30	6:30-8:15 am
4040302	Mon-Fri	Jan 6 -May 30	3:15-6:00 pm
4040303	Mon-Fri	Jan 6 -May 30	6:30-8:15 am/3:15-6:00 pm



Park District Youth Program License Plates



The sale and subsequent renewals of each plate generates \$25 for the PowerPlay Beyond School Grant Program, which funds youth programs in park and recreation agencies throughout Illinois. The goal of the PowerPlay program is to increase the number of opportunities designed to show youth the lifelong benefits of fitness, health and nutrition.

Park District Youth Program plates also may be requested through Pick-a-Plate at www.cyberdriveillinois.com. For more information, call 217-785-5215, or visit www.cyberdriveillinois.com.

Key
Co-operative Program = **C** Parent/Child Program = **PC**

www.medinahparkdistrict.org

Baby Rock/Tot Rock/Kid Rock I & II (BW)

Baby Rock **C** **PC**

Wiggle and giggle with Baby Rock! A unique combination of sensory experiences with stimulating music and exercises to help strengthen and stretch your baby. Activities will include sing alongs, exposure to simple instruments and sensory props, bean bag massages, motion exercises, bubbles, and more! Please bring a blanket or mat and get ready for a rockin' good time with your tiniest dancer! www.rockitkids.com

Tot Rock, Kid Rock I & II **C**

Maracas and clackers and tambourines, too; it's musical fun just for you! Our active, music-based, creative play programs include songs and rhymes, rhythm and coordination, fine and gross motor, imagination and sensory, listening and following directions skills, and more! Structured activities are age appropriate by class and include use of engaging rhythm instruments, movement props, and sensory materials. Sing, dance, play, learn and imagine! www.rockitkids.com

Location Connolly Recreation Center-Maple Room
Instructor Rock 'n' Kids, Inc.



Baby Rock! **C** **PC** Ages 3-12 months (non-walkers) w/ parent

Fee	\$57(R)/\$72(NR) \$80(R)/\$95(NR)*
Min/Max	3/10 per district
Code	Day Date Time
1010600-01	Mon Jan 6-Feb 3 10:40-11:10 am
1010600-02	Mon Feb 17-Mar 17 10:40-11:10 am
2010600	Mon Apr 7-May 19* 10:40-11:10 am

Tot Rock! **C** **PC** Ages 12-30 months old w/ parent

Fee	\$64(R)/\$79(NR) \$90(R)/\$105(NR)*
Min/Max	4/12 per district
Code	Day Date Time
1010601-01	Mon Jan 6-Feb 3 9-9:40 am
1010601-02	Mon Feb 17-Mar 17 9-9:40 am
2010601	Mon Apr 7-May 19* 9-9:40 am

Kid Rock I & II **C** **PC** Ages 2-5

Fee	\$64(R)/\$79(NR) \$90(R)/\$105(NR)*
Min/Max	4/12 per district
Code	Day Date Time
Kid Rock I	(2-3 years old w/ parent)
1010602-01	Mon Jan 6-Feb 3 9:45-10:25 am
1010602-02	Mon Feb 17-Mar 17 9:45-10:25 am
2010602	Mon Apr 7-May 19* 9:45-10:25 am

Kid Rock II	(3-5 year olds w/out parent)
1010603-01	Mon Jan 6-Feb 3 11:20 am-12 pm
1010603-02	Mon Feb 17-Mar 17 11:20 am-12 pm
2010603	Mon Apr 7-May 19* 11:20 am-12 pm

Please see additional programs for the Early Childhood age group below and on other pages throughout this brochure.

- Lil' Critters Summer Fun Camp – Ages 2.5-5 pg 15
- Preschool/Early Childhood Enrichment – Ages 2-4..... pg 16
- Dance – Ages 3+ pgs 20-21
- Pee Wee Sports – Ages 3-5..... pg 26
- Little Sluggers T-ball – Ages 3.5-6..... pg 26
- Pee Wee Tennis – Ages 4-6..... pg 26
- Little Hoops – Ages 4-6..... pg 27
- Co-Ed Youth Spring Soccer League – Ages 4-14 pg 28
- Lil' Dribblers – Ages 4-5 pg 29
- T-ball Skills – Ages 4-6..... pg 29
- Pee Wee Flag Football – Ages 4-7 pg 29
- Shotokan Karate – Ages 4-Adult..... pg 31

Tiny Kickers Pee Wee Soccer (JN) Ages 3-4

The class introduces the fundamentals of soccer like dribbling, kicking and ball control through the use of age-appropriate games and activities. Don't forget a size 3 soccer ball, shin guards and a water bottle!

Location Clauss Recreation Gym
555 W. Bryn Mawr Ave., Roselle

Instructor Hot Shots Sports
Fee \$91(R)/\$106(NR)
Min/Max 4/12

Code	Day Date Time
1040560-01	Wed Jan 15-Feb 19 4:45-5:25 pm
1040560-02	Wed Feb 26-Apr 2 4:45-5:25 pm

Spring Break Camp (BW) Ages 4.5-12

Spring break can be a chance to kick your feet up and relax. But why would you want to relax when you can have so much fun here! Send your kids to the Medinah Park District for days of cool activities including: group games, crafts, movies, gym time, and more. Please send a lunch, snack and water bottle with your child every day. **Please contact Brooks at Brooks@medinahparks.org if you wish to register for individual day options.**

Location Connolly Recreation Center-Walnut Room
Instructor MPD Staff
Fee \$200(R)/\$215(NR)
Min/Max 6/20

Code	Day Date Time
1040200	Mon-Fri Mar 31-Apr 4 7:30 am-5:30 pm

Registration Deadline: Mar 8

Medinah Park District School of Dance (BW)



Connecting communities to creative arts—that is what we do at Innovation Arts Connection! Our progressive curriculum focuses on dance concepts and core techniques as well as teaching the importance of respect, positive attitude and hard work. In our classes students will develop grace, rhythm, coordination, creativity, and confidence in a fun, safe and structured environment. IAC's dance classes offer stability, a sense of community, socialization and structure. We look forward to seeing you in class!

Innovation Arts Connection, LLC collaborates with local Chicagoland park districts. For more information about the IAC program including class expectations, dress code and more, please visit www.innovationartsconnection.com or find us on Instagram or Facebook @innovationartsconnection.

PARK STUDIO CLASSES

The Park Studio program track is a studio program designed around the Park District community culture. **This track is for dancers of all ages and experience levels who are looking for a progressive session and higher commitment level with participation in a final Spring Production: The Happiest Recital On Earth (Disney/Disney+ themed show) on Saturday, June 14, 2025 at Lake Park High School. PRODUCTION FEES INCLUDED WITH TUITION!!! NEW THIS YEAR: PAYMENT PLANS AVAILABLE!!!** Within this program, participants can engage in core studio-level dance classes. All classes are held at Medinah Park District's Connolly Recreation Center. In the event of inclement weather classes will be held virtual on Zoom.

Ballet/Tap Combo (A, B, I) – Ballet/Tap Combo is the most popular combo for dancers. Classes include stretches, barre work, class etiquette, basic technique of each style, games and learning choreography in both ballet and tap. Please wear leotard, tights, or comfortable form fitted clothing, ballet & tap shoes.

Ballet/Lyrical Combo (II & III) – Ballet/Lyrical Combo will focus on the core movements and techniques of classical and modern forms of ballet. Classes include stretches, barre work, class etiquette, center work, across the floor and choreography. Please wear leotard, tights, or comfortable form fitted clothing, ballet shoes.

Tap (II & III) – Tap will focus on the fundamentals of this percussive style of dance and will allow dancers to focus on their skills, technique and rhythm. Classes include stretches, class etiquette, center work, across the floor and choreography. Please wear leotard, tights, or comfortable form fitted clothing, tap shoes.

Hip Hop/Jazz Combo (A & B, II & III) – Jazz music and dance evolved over the years into the popular style of Hip Hop! Dancers will learn basic jazz and hip-hop techniques along with popping, locking, and many other cool tricks and moves to energetic pop music. Please wear leotard, tights, or comfortable form fitted clothing, jazz shoes.

Spring Recital 2025: The Happiest Recital on Earth

Mark your calendars:
TENTATIVELY June 14, 2025
PRODUCTION FEES INCLUDED IN TUITION!



NEW PAYMENT PLAN OPTIONS

****You now have the option to pay for Park Studio classes in full, or four quarterly monthly installments****

To set up your payment plan, please reach out to Brooks Wogelius at Brooks@medinahparks.org or call the office at (224) 524-0006.

Jan 6-Jun 2

No Class: Mar 24, 31 & May 26

Code	Monday	Age	Time	Fee R/NR	Min/Max
1030600-01	Ballet/Tap A	3-6	4:20-5:05 pm	\$396(R)/\$411(NR) **Park Studio four quarter payment plan option \$99(R)/\$114(NR)	5/7
1040600-01	Ballet/Tap B	5-7	5:10-6:10 pm	\$460(R)/\$475(NR) **Park Studio four quarter payment plan option \$115(R)/\$130(NR)	5/8
1040600-02	Ballet/Tap I	7-10	6:15-7:25 pm	\$525(R)/\$540(NR) **Park Studio four quarter payment plan option \$132(R)/\$147(NR)	5/9
1050600-01	Ballet/Lyrical II & III	10-16	7:30-9:00 pm	\$590(R)/\$605(NR) **Park Studio four quarter payment plan option \$148(R)/\$163(NR)	5/9

Jan 9-May 29

No Classes: Mar 27 & Apr 3

Code	Thursday	Age	Time	Fee R/NR	Min/Max
1030600-02	Hip Hop/Jazz A & B	4-7	6-7 pm	\$460(R)/\$475(NR) **Park Studio four quarter payment plan option \$115(R)/\$130(NR)	5/7
1050600-02	Hip Hop/Jazz II & III	10-15	7:05-8:05 pm	\$460(R)/\$475(NR) **Park Studio four quarter payment plan option \$115(R)/\$130(NR)	5/9
1050600-03	Tap II & III	10-15	8:10-8:55 pm	\$396(R)/\$411(NR) **Park Studio four quarter payment plan option \$99(R)/\$114(NR)	5/9

Jan 10-May 30

No Class: Mar 28 & Apr 4

Code	Friday	Age	Time	Fee R/NR	Min/Max
1050600-04	Strength & Conditioning for Dancers	10-16	5-5:30 pm	\$147(R)/\$162(NR)	4/9

DANCE PARTIES

Dance Parties are condensed 1-day sessions of dance technique, movement games, crafts, a mini-performance and much more! Participants of all levels are encouraged to get involved through these camp-style classes that are designed to help participants fill their evening with fun, educational, and movement-oriented programming. Wear comfortable form-fitted clothing, dance shoes or bare feet. Feel free to dress to match the theme too! Please bring a water bottle.

Rise of Red Dance Party

It is time to dance like the Queen of Hearts and all of Wonderland! Hip Hop technique, movement games, crafts and choreography to Descendants music included.

Code	Day	Date	Age	Time	Fee R/NR	Min/Max
1030600-03	Sat	Feb 15	3-8	10:15-11:45 am	\$35(R)/\$50(NR)	5/7

Island Breeze Dance Party

Grab your beach gear and get ready to conquer the ocean waves! Ballet dance technique, movement games, crafts and choreography to Moana music included.

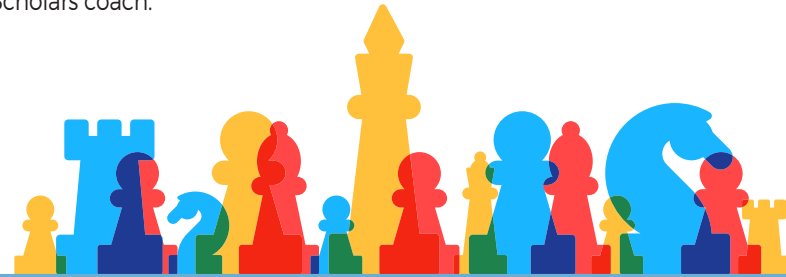
Code	Day	Date	Age	Time	Fee R/NR	Min/Max
2030600	Sat	May 10	3-8	10:15-11:45 am	\$35(R)/\$50(NR)	5/7

Chess Scholars (BW)
K-5th Grade

Develop your child's intellect through the royal game of chess! Current research has shown a strong link between chess and academic performance in a variety of areas, including mathematics and language arts. Chess has been proven to enhance children's motivation, concentration, focus, social skills, and creativity. Each class will consist of a fun, interactive teaching period and guided practice time. Both beginner and experienced players are welcome and will learn under the guidance of an experienced Chess Scholars coach.

Location Connolly Recreation Center- Oak Room
Instructor After School Enrichment Staff
Fee \$170(R)/\$185(NR)
Min/Max 8/16
Code 1040411
Day Wed
Date Mar 19-May 7
Time 5:30-6:30 pm

No Class: Apr 2



MusicStart (BW)
K-4th Grade

Learn to read music and play tunes! Brought to you by AES and The Music Path Company, this amazing program teaches young students the beginnings of music! Using specialized, proprietary MusicStart keyboards, students learn to play familiar tunes in a group setting by color, letter, and note matching while using problem-solving strategies - without sacrificing any important musical knowledge - we are not taking shortcuts to playing and reading music. Prepare your student to take any instrument by giving them a solid musical foundation with this exciting program!

Location Connolly Recreation Center- Oak Room
Instructor After School Enrichment Staff
Fee \$220(R)/\$235(NR)
Min/Max 8/12

Code 1040410
Day Mon
Date Jan 27-Mar 10
Time 5:30-6:30 pm

**MAD SCIENCE:
SECRET AGENT LAB!**

Grades K-5

The following is TOP SECRET: Ever dream of becoming a secret agent? We'll start with the basics: From decoding messages to metal detectors and night vision, students have the opportunity to check out spy tech equipment and take-home lots of gadgets! Become a super spy and learn clever ways of performing tasks as we take a hands-on investigation of the science that spies use!

Location Johnston Recreation Center
172 S. Circle Ave., Bloomingdale
Instructor Mad Science
Fee \$244(R)/\$259(NR)
Min/Max 12/25

Code 1040412
Day Mon
Date Mar 10-Apr 28
Time 5-6 pm

No Class: Mar 31

Video Game Lab (BW) ©
Ages 8-12

Let's create a game on the PC with Xbox controllers! Using a visual programming language, where students can learn about creativity, problem solving, and collaboration. It's not just about programming. Stretch your imagination to design and build fun-filled, challenging games.

Location Clauss Recreation Center-
555 W Bryn Mawr Ave., Roselle
Instructor Computer Explorers
Fee \$40(R)/\$55(NR)
Min/Max 2/4 per district

Code 1040425-01
Day Mon
Date Feb 17
Time 3-5 pm



Ages 8-13 (BW)

Unleash your creativity and spontaneity with our Improv Acting Class! Whether you're a seasoned performer or a complete beginner, this class is designed to help you think on your feet, enhance your acting skills, and have a blast in a supportive, fun environment.

Location Connolly Recreation Center
Instructor Lynda Wellhausen
Fee \$100(R)/\$115(NR)
Min/Max 4/12

Code 1040600-05
Day Thu
Date Feb 13-Apr 10
Time 6:30-7:30 pm

Robotics Academy (BW) ©
Ages 8-12

Explore the world of robotics and coding in this hands-on environment, full of experiments, exploration and collaboration as we meet different robots and learn the challenges of programming and problem solving.

Location Johnston Recreation Center- 172 S Circle Ave.,
Bloomingdale
Instructor Computer Explorers
Fee \$100(R)/\$115(NR)
Min/Max 2/3 per district

Code 2040425
Day Wed
Date Apr 9-30
Time 5-6:15 pm

Magic Class (BW) ©
Ages 5-12

MAGIC CLASS! Children are guaranteed to have a great time as they learn a collection of fascinating and mesmerizing tricks from the "Magic Team of Gary Kantor"! Amaze family and friends with tricks that involve cards, ropes, coins, mind-reading, and more. All materials are provided, and each child receives a magic kit to take home. Children are grouped by age and always learn tricks that are age-appropriate. Additionally, you can sign up for this class again and again since brand new tricks are always taught at each session! Each child receives a magic kit to take home.

Location Itasca Park District, 350 Irving Park Rd., Itasca
Instructor Magic Team of Gary Kantor
Fee \$27(R)/\$42(NR)
Min/Max 5/15 per district

Code 1040406-01
2040406-02
Day Thu
Tue
Date Jan 16
May 27
Time 6:45-7:40 pm
6:45-7:40 pm





Little Chefs with Chef Pina (JN)

Ages 5-10

Have you ever wanted to impress friends at a dinner party with your cooking skills? Smell, taste and learn in this hands-on class. Bring out your inner chef by creating and sampling the goodies you prepare during these one-day cooking classes. Come in your best chef's attire and bring your appetite. Deadlines for each class are one week prior to the program. All loose hair must be tied up. Registration is required for all participants in the class. Bring containers for any leftovers.

Location Chef's Corner, 172 S. Circle Ave., Bloomingdale
Instructor Chef Pina
Fee \$46(R)/\$61(NR)
Min/Max 5/10

Code	Day	Date	Time	Cuisine
1040470-01	Fri	Jan 10	6-8 pm	Make Your Own Pizza
1040470-02	Fri	Feb 7	6-8 pm	Soups & Breads
1040470-03	Fri	Mar 7	6-8 pm	Cookies, Cookies, Cookies
1040470-04	Fri	Apr 4	6-8 pm	Pina's Meatballs & Pasta
1040470-05	Fri	May 9	6-8 pm	Taco Night

Camp Cooking with Friends Winter Break & Spring Break Editions (JN)

Ages 5-12

Calling all youth interested in learning how to cook, bake and explore the kitchen! Participants learn how to prepare new foods and desserts. Each day we will make three recipes. All supplies are included in the fee. Long hair must be tied up. Please let us know of any food allergies at the time of registration. Registration deadline is one week prior to the class.

Location Chef's Corner, 172 S. Circle Ave., Bloomingdale
Instructor Chef Pina
Fee \$125(R)/\$140(NR)
Min/Max 5/10

Code	Day	Date	Time	Cuisine
1040471-01	Thu & Fri	Dec 26 & 27	10 am-2 pm	Winter Break
1040471-02	Mon & Tue	Mar 31 & Apr 1	10 am-2 pm	Spring Break

Parent & Child Cooking Classes (JN)

Ages 5-12 with Parent

Bond with your child as you create a meal and leave the prep and clean-up to us. Chef Pina teaches a different recipe each week. Participants see, smell, taste, ask questions about, and learn the background of various food. All long hair should be tied back. Bring a container for leftovers. Prices are per couple.

Menu ***All meals are served with bread and a dessert***

- Soup & Bread: Simple Vegetable Soup, Grilled Cheese
- Easy "Peasy" Fettuccini Alfredo Night: Homemade Fettuccini Alfredo, Cesar Salad with homemade croutons and gelato ice cream
- Brunch for Dinner: Quiche, breakfast potatoes, & fruit salad.

Location Chef's Corner, 172 S. Circle Ave., Bloomingdale
Instructor Chef Pina
Fee \$54(R)/\$71(NR)
Min/Max 5/10

Code	Day	Date	Time	Cuisine
1040472-01	Fri	Feb 28	6:30-8:30 pm	Soup & Bread
1040472-02	Fri	Mar 28	6:30-8:30 pm	Easy "Peasy" Fettuccini Alfredo
1040472-03	Fri	May 23	6:30-8:30 pm	Brunch for Dinner

School Days Off (BW)

Ages K-5th Grade

School Days Off! Children will enjoy their school days off with activities, games, and fun with friends at the park district! Children will need to bring lunch, snack, water bottle and wear gym shoes. **Registration Deadline is the day prior to. This is a separate registration from the Power Through Before/After School Care.**

Location Connolly Recreation Center
Instructor MPD Staff
Fee \$40(R)/\$55(NR) per date
Min/Max 6/15

Code	Day	Date	Time
1040300-01	Mon	Jan 20	7:30 am-5:30 pm
1040300-02	Fri	Feb 14	7:30 am-5:30 pm
1040300-03	Mon	Feb 17	7:30 am-5:30 pm
1040300-04	Mon	Mar 3	7:30 am-5:30 pm
2040300-01	Fri	Apr 18	7:30 am-5:30 pm

Winter Days Off Camp (BW)

Ages 5-12

Searching for winter break plans? Send your kids to the Connolly Recreation Center for a day packed with activities! They'll enjoy games, crafts, movies, gym time, and more. Don't forget to pack a sack lunch and a drink for your child.

Location Connolly Recreation Center-Walnut Room
Instructor Medinah Park District Staff
Fee \$40(R)/\$55(NR)
Min/Max 6/15

Code	Day	Date	Time
4040210-01	Mon	Dec 23	7:30 am-5:30 pm
4040210-02	Thu	Dec 26	7:30 am-5:30 pm
4040210-03	Fri	Dec 27	7:30 am-5:30 pm
4040210-04	Mon	Dec 30	7:30 am-5:30 pm
4040210-05	Thu	Jan 2	7:30 am-5:30 pm
4040210-06	Fri	Jan 3	7:30 am-5:30 pm

Spring Break Camp (BW)

Ages 4.5-12

Spring break can be a chance to kick your feet up and relax. But why would you want to relax when you can have so much fun here! Send your kids to the Medinah Park District for days of cool activities including: group games, crafts, movies, gym time, and more. Please send a lunch, snack and water bottle with your child every day. **Please contact Brooks at brooks@medinahparks.org if you wish to register for individual day options.**

Location Connolly Recreation Center-Walnut Room
Instructor MPD Staff
Fee \$200(R)/\$215(NR)
Min/Max 6/20

Code	Day	Date	Time
1040200	Mon-Fri	Mar 31-Apr 4	7:30 am-5:30 pm

Registration Deadline: Mar 8



Follow Us



Pee Wee Sports (BW)

Ages 3-5

We have found this exciting class to be just what parents need to give their children a positive first step into athletics. We play a different sport each week, including soccer, baseball, hockey, basketball, and football. Participants will start developing socialization, teamwork, direction following, and key motor skills. **If your child is enrolled in our preschool program, staff will walk your child to this class.**

Location Connolly Recreation Center-Gym
Instructor Sports R Us Staff
Fee \$72(R)/\$87(NR)
Min/Max 6/12

Code	Day	Date	Time
1030400	Wed	Jan 22-Feb 26	11:30 am-12:20 pm
2030400	Wed	Apr 9-May 14	11:30 am-12:20 pm

Little Sluggers T-ball (JN)

Ages 3.5-6

Younger kids will love this introduction to one of the most popular sports around! Participants will learn the basic skills of baseball: throwing, catching, base running, hitting, and fielding, all in a non-competitive environment. Innings will consist of all players batting, and no score will be kept. Please let us know if you are interested in coaching. Team t-shirt and hat will be provided. Practices are once per week based on coach and field availability. Games on Saturday. Fee includes t-shirt and hat. Baseball pants and socks are required.

Location Medinah Intermediate School-TBall Field North
Instructor Volunteer Parent
Fee \$75(R)/\$90(NR)
Min/Max 8/12 players per team

Code	Day	Dates
2040521	Sat	May 3-Jun 29

Registration Deadline: Apr 18

NEW! Pee Wee Tennis (JN)

Ages 4-6

Your child will learn proper grip, basic strokes, and other beginning tennis fundamentals through lots of fun drills and tennis-like games. This class also will help children to develop hand-eye coordination, movement skills, and get a feel for the ball. Equipment will be provided and age appropriate. Boys and girls will have a blast and gain the proper foundation on which they may continue to build and develop their interest in tennis. Please bring a labeled water bottle.

Location Thorndale Park Tennis Courts
Instructor SportsKids Inc.
Fee \$59(R)/\$74(NR)
Min/Max 6/16

Code	Day	Date	Time
2040520	Wed	Apr 16-May 21	4:15-5 pm

NEW! Junior Tennis (JN)

Ages 7-9

Youngsters enrolled in this class will learn racket face control, ball bounce judgment, receiving skills, space management, rallying skills, and court movement. They will develop the agility and coordination needed for effective tennis play. Players will focus on their power and accuracy to improve their performance. Situational drills and games will help them to establish a solid foundation for future development in the sport and build a lifelong love of tennis. Equipment will be provided. Please bring a labeled water bottle.

Location Thorndale Park Tennis Courts
Instructor SportsKids Inc.
Fee \$78(R)/\$93(NR)
Min/Max 6/16

Code	Day	Date	Time
2040522	Wed	Apr 16-May 21	5-6 pm



Little Hoops (JN)

Ages 4-6

Our instructional/team program prepares your future hoops player! Volunteer coaches will teach participants fundamental skills, basic techniques and improvement of motor skills required for the game of basketball. Players will use junior-sized balls and shorter hoops to build confidence. Practices will be held once a week with scrimmages being played on Saturday mornings at the Wood Dale, Itasca or Medinah Park District. Team t-shirts will be provided. If you are interested in coaching, please note this on your child's registration form. Saturday game times are TBD.

Location Connolly Recreation Center-Gym
Instructor Volunteer Parent
Fee \$80(R)/\$95(NR)
Min/Max 6/8 players per team

Code	Day	Date
1040530	Sat	Jan 13-Mar 15

Registration Deadline: Jan 10

Rookies Basketball League (JN)

Grades 1st & 2nd

This is a co-ed program in cooperation with the Roselle Park District. This fun co-ed youth basketball league is forming teams now! It'll be four on four with a parent joining the action. It's driveway basketball at its best. Each team will need a volunteer adult player/coach. Please let us know on your registration form if you are interested in volunteering. Rosters will be 6-8 players per team. Practices will start in December with games beginning in January, 2025. Don't be left sitting on the bench. A t-shirt will be included, please note size on registration form. It'll be slam dunk fun! Rosters open until filled.

Location Connolly Recreation Center-Gym
Instructor Volunteer Parent
Fee \$85(R)/\$100(NR)
Min/Max 6/10 players per team

Code	Date
1040540	Dec 2024-Mar 2025



Youth Basketball League (JN)

Grades 3rd-8th

The Medinah Park District offers this recreational league for both boys and girls in grades 3rd-8th. Focus will center on individual instruction, teamwork, and friendly competition. Weekly practices begin in early December and games against other local park district teams start in January and run through the middle of March. Games are played at home and on the road. We rely on volunteer coaches to help run this program. Please indicate on your child's registration form if you are interested in coaching a team.

Location Connolly Recreation Center-Gym
Instructor Volunteer Coaches
Fee \$105(R)/\$120(NR) + \$30 jersey fee
Min/Max 6/10 players per team

*All participants must purchase a reversible jersey. Returning participants may purchase a jersey. Rosters open until filled.

Girls League
 December 2024-March 2025

Code	Grade
1040541	3rd & 4th
1040542	5th & 6th
1040543	7th & 8th

Boys League
 December 2024-March 2025

Code	Grade
1040544	3rd & 4th
1040545	5th & 6th
1040546	7th & 8th

Medinah Co-ed Youth Spring Soccer League (JN)

Ages 4-14

Enjoy the fun and excitement of league soccer! The Medinah Co-ed Spring Youth Soccer League will participate in the Mid-Suburban Soccer League. Other districts included are: Addison, Glendale Heights, Itasca, Roselle, Villa Park and Wood Dale. This league promotes an atmosphere of enjoyment, teamwork, and good sportsmanship while learning and improving upon fundamental skills. Adult volunteers coach and instruct each team. Teams will be formed immediately following the registration deadline and volunteer coaches will be confirmed and contacted.

Registration – Every effort will be made to place registrants on a team; however, once a team has filled, registrants will be placed on a wait list in an effort to create another team. In the event we have enough wait list participants, kids will be divided up to create an even number of boys and girls on each team. Because of this, we **cannot guarantee** that your child will play on a requested team. Participants will be informed of team placement by their coach on or before Friday, March 28th, 2025.

Registration Deadline: March 21st

Practices and Games – Practices are held once per week with practice days and times set at the discretion of the coach. Games will be played on Saturdays. Time and location of games will be determined by league schedules. Parents must be able to transport their child to and from practices and games.

Uniforms – All players must wear a Medinah Park District uniform. If you are new to the program you must order a new jersey (\$25) at the time of registration. Please note on your registration form the size of jersey you would like to order (YS, YM, YL, AS, AM, AL). Black shorts and socks are required and should be purchased on your own. All participants are required to wear shin guards underneath their socks at all practices and games.

Coaches – The Medinah Park District relies on volunteer coaches to help run this program. Without volunteers, we would be unable to offer such a popular program. All coaches will be provided with certification and educational materials for the purpose of safety and improved skill development for players. If you are interested in coaching, please indicate your interest on your child's registration form.

Location Manary Park, Medinah Middle School, Thorndale Park (practices/home games only)
Instructor Volunteer Coaches
Fee \$80(R)/\$95(NR) – *Early bird fee*
 \$90(R)/\$105(NR) – *After March 9th*
Jersey Fee \$25
Age 4-14 years old

Code	Day	Dates	Grade (2023/24)	Min/Max Per Team	# of Players on Field
2040530-01	Sat	Apr 12-Jun 7	Pre K-Kindergarten	5/6	3v3 No Goalie
2040530-02	Sat	Apr 12-Jun 7	1st-2nd Grade	6/8	4v4 No Goalie
2040530-03	Sat	Apr 12-Jun 7	3rd-4th Grade	9/14	7v7
2040530-04	Sat	Apr 12-Jun 7	5th-6th Grade	9/14	8v8
2040530-05	Sat	Apr 12-Jun 7	7th-8th Grade	11/14	10v10

Note: In the event a game is canceled due to weather, every attempt will be made to make it up during the week; however, we cannot guarantee this because of factors out of our control and therefore, are not able to give refunds for a shortened season.

**** Park district members of the Mid-Suburban Soccer League have adopted the new standards set forth by the U.S. Youth Soccer Organization. New age groups will play small sided games with adjusted field sizes to encourage more touches and player development. The adopted changes will create more skillful players by allowing for more individual teaching and play time on either side of the ball. Teams will be based on approximately 5 to 14 players per roster depending on age groups (see above).**

**Save \$10
Early bird deadline
March 8**



Hot Shots Sports aims to develop young athletes who will grow emotionally, physically, and intellectually in our sports programs. By redirecting the focus away from wins and losses and towards personal growth, we create an environment where winning is the byproduct of, and not the means to, success. This approach creates critical thinkers who understand the importance of giving their best in practice, games, and other endeavors. Our coaches take pride in fostering that drive and motivating your child to find the champion inside of themselves.

Tiny Kickers Pee Wee Soccer (JN)

Ages 3-4

The class introduces the fundamentals of soccer like dribbling, kicking and ball control through the use of age-appropriate games and activities. Don't forget a size 3 soccer ball, shin guards and a water bottle!

Location Clauss Recreation Gym
 555 W. Bryn Mawr Ave., Roselle
Instructor Hot Shots Sports
Fee \$91(R)/\$106(NR)
Min/Max 4/12

Code	Day	Date	Time
1040560-01	Wed	Jan 15-Feb 19	4:45-5:25 pm
1040560-02	Wed	Feb 26-Apr 2	4:45-5:25 pm

Lil' Dribblers (JN)

Ages 4-5

The Lil' Dribblers Basketball program introduces children to the game of basketball in a safe, fun and exciting environment. Our curriculum uses age-appropriate activities and games specifically designed to increase balance, body awareness, motor skills, hand/eye coordination, listening skills and the ability to follow directions.

Location Clauss Recreation Center-South Gym
 555 W. Bryn Mawr Ave., Roselle
Instructor Hot Shots Sports
Fee \$85(R)/\$100(NR)
Min/Max 4/12

Code	Day	Date	Time
1040562-01	Fri	Jan 10-Feb 14	4:00-4:45 pm
1040562-02	Fri	Feb 21-Mar 21	4:00-4:45 pm

No Class: Feb 7

T-ball Skills (JN)

Ages 4-6

This introductory T-ball program is perfect for a child who wants to have fun, make new friends and be introduced to baseball. Participants enjoy learning the skills needed to play baseball including offense and defense, as well as the rules and philosophies of the game. The program stresses teamwork over competition. All you need to bring is a glove!

Location Clauss Recreation Gym
 555 W. Bryn Mawr Ave., Roselle
Instructor Hot Shots Sports
Fee \$85(R)/\$100(NR)
Min/Max 6/12

Code	Day	Date	Time
1040561	Sat	Jan 11-Feb 15	9:45-10:30 am

Pee Wee Flag Football (JN)

Ages 4-7

Come join in on the fun and start playing the nation's most loved game! Players are introduced to stance, receiving, rushing, blocking and defense. Each week ends with a scrimmage encouraging teamwork and sportsmanship. Players always get to play either receiver or running back each week. Games focus on fundamentals and field concepts, as well as positions and mechanics. No equipment necessary!

Location Clauss Recreation Gym
 555 W. Bryn Mawr Ave., Roselle
Instructor Hot Shots Sports
Fee \$85(R)/\$100(NR)
Min/Max 4/12

Code	Day	Date	Time
1040563	Sat	Jan 11-Feb 15	10:30-11:15 am

Program registrations are due one week prior to the program start date, unless class maximums are reached. If maximums are reached, wait lists will be formed.

Follow Us



Big Kickers Soccer 101 (JN) ©

Ages 5-7

This class focuses on developing the technical soccer skills of the athlete while improving overall knowledge of the game through drills and activities. Don't forget a size 3 soccer ball, shin guards and a water bottle!

Location Claus Recreation Gym
555 W. Bryn Mawr Ave., Roselle

Instructor Hot Shots Sports

Fee \$91(R)/\$106(NR)

Min/Max 4/12

Code	Day	Date	Time
1040564-01	Wed	Jan 15-Feb 19	5:30-6:15 pm
1040564-02	Wed	Feb 26-Apr 2	5:30-6:15 pm

Basketball 101 (JN) ©

Ages 6-8

Develop early basketball skills such as shooting, dribbling and passing, along with the basic rules of the game. All instruction is game/drill oriented with mini games and scrimmages played every week. This class is for the basketball beginner looking to understand the game, learn new skills, and have fun!

Location Claus Recreation Center-South Gym
555 W. Bryn Mawr Ave., Roselle

Instructor Hot Shots Sports

Fee \$85(R)/\$100(NR)

Min/Max 4/12

Code	Day	Date	Time
1040566-01	Fri	Jan 10-Feb 14	4:45-5:30 pm
1040566-02	Fri	Feb 21-Mar 21	4:45-5:30 pm

No Class: Feb 7

**Martial Arts****Taekwon-Do** (JN) ©

Ages 8-Adult

Imagine what an advantage you will have now, and in the future, by learning martial arts today. Do you like to stretch, kick, punch, relieve stress, and feel good? The benefits of Taekwon-Do include character building, confidence, self-esteem, discipline, focus, perseverance, physical fitness, improved balance, coordination, strength, flexibility, and self-defense. Imagine that "attitude is everything" and you will never give up in any aspect of your life. This is Taekwon-Do!

Location Monday: 5:00-6:00 pm, Medinah Park District, 22W130 Thorndale Ave, Medinah
Wednesday: 6:00-7:00 pm, Itasca Park District, 350 Irving Park Rd, Itasca

Junior Flag Football (JN) ©

Ages 8-11

Players experience daily scrimmages with active instruction and tips from the coaching staff. Players are encouraged to employ skills used in football such as running pass routes, play calling, defensive positioning, the fundamentals of blocking and pass coverage. These skills and others will be put to use in a "game time" environment while the players scrimmage each week.

Location Claus Recreation Gym
555 W. Bryn Mawr Ave., Roselle

Instructor Hot Shots Sports

Fee \$91(R)/\$106(NR)

Min/Max 4/12

Code	Day	Date	Time
1040565	Sat	Jan 11-Feb 15	11:15 am-12:15 pm

Basketball Skills Clinic 102 (JN) ©

Ages 9-12

The next step in basketball instruction, this class will build upon the fundamentals taught in the Basketball 101 class. A slightly faster paced environment will be geared around competitive play, encouraging tactics such as attacking the basket and aggressive defense. Players should have basic knowledge of the rules and be able to dribble comfortably to succeed in the class.

Location Claus Recreation-South Gym
555 W. Bryn Mawr Ave., Roselle

Instructor Hot Shots Sports

Fee \$85(R)/\$100(NR)

Min/Max 4/12

Code	Day	Date	Time
1040567-01	Fri	Jan 10-Feb 14	4:45-5:30 pm
1040567-02	Fri	Feb 28-Mar 21	4:45-5:30 pm

No Class: Feb 7

Instructor Barry Weisberg
Fee \$60(R)/\$75(NR)
\$30 each additional family member
Min/Max 8/50

Code	Day	Date
4040560-03	Mon/Wed	Nov 6-Jan 22
4040560-04	Mon/Wed	Nov 6-Jan 22 (additional member)
1040570-01	Mon/Wed	Feb 3-Mar 26
1040570-02	Mon/Wed	Feb 3-Mar 26 (additional member)
2040570-01	Mon/Wed	Apr 7-May 28
2040570-01	Mon/Wed	Apr 7-May 28 (additional member)

Illinois Shotokan Karate Club (JN) ©

Ages 4-Adult

Illinois Shotokan Karate Club is Chicagoland's premier karate school taught under the instruction of John DiPasquale, a four-time National Champion and President of the American Shotokan Karate Association.

- Uniforms and Belt-Testing are options available through the ISKC instructor.
- Please note that the Youth and Adult classes train together.
- Beginner students will not be permitted to register into the current session after the second class has met.
- Registration for continuers through advanced students will be accepted after the start date, but full class fee is required.
- Please visit www.iskc.com for more information or call us at (847) 359-0666.

Pre Karate (4-6 Years)

In our Pre-Karate Safety classes, young children develop flexibility, strength, and coordination in fun, yet disciplines activities. This program is specifically designed for growing minds and bodies to enhance memory and agility. Watch your child's confidence blossom and their skills improve.

Youth/Adult (7+ years)

ISKC's Karate classes offers a good mix of strength training, with cardiovascular and flexibility exercises. Students increase their coordination, agility and poise, as well as learn lasting personal safety skills. They also benefit from the mental stimulation of learning the choreographed moves of the kata and the discipline of conforming to the class rules.

Location Community Recreation Center
505 N. Springinsguth, Schaumburg

Min/Max 1/3

Day	Date	Fee
Tue	Jan 7-Mar 25	\$182
Tue	Apr 1-Jun 3	\$152

Pre Karate (4-6 years)

Ses. I Code	Ses. II Code	Time	Level
1040580-01	2040580-01	4-4:45 pm	Beginner/Continuer (White belts)
1040580-02	2040580-02	4:50-5:35 pm	Intermediate/Advanced (Stripe belts & Up)

Youth/Adult (7-Adult)

Ses. I Code	Ses. II Code	Time	Level
1040580-03	2040580-03	5:45-6:40 pm	Beginner/Cont. (White-Orange belts)
1040580-04	2040580-04	6:50-7:45 pm	Novice (Yellow-Low Purple belts)
1040580-05	2040580-05	7:55-8:50 pm	Inter/Adv. (High Purple-Black belts)

Location Meineke Recreation Center
220 E. Weathersfield Way, Schaumburg

Min/Max 1/5, 1/6

Day	Date	Fee
Sat	Jan 4-Mar 22	\$182/\$227*
Sat	Apr 5-Jun 7	\$152/\$190*

Pre-Karate (4-6 years)

Ses. I Code	Ses. II Code	Time	Level
1040581-01	2040581-01	2:45-3:30 pm	Beginner/Continuer (White Belt)
1040581-02	2040581-02	3:40-4:25 pm	Inter/Adv. (Stripe belts & up)

Youth/Adult (7-Adult)

Ses. I Code	Ses. II Code	Time	Level
1040581-03	2040581-03	12:20-1:15 pm	Beginner (No Experience-White w/stripes)
1040581-04	2040581-04	1:20-2:15 pm	Continuer (Red-Orange belts)
1040581-05	2040581-05	2:25-3:20 pm	Novice (Yellow-Low Purple belts)
1040581-06	2040581-06	3:30-4:25 pm	Intermediate (High Purple-Black belts)
1040581-07	2040581-07	4:35-6 pm*	Advanced (Brown w/permission-Black belts)

Note: Fee is per person



Chef Pina's Cooking Classes (JN) ©

Ages 21+

Have you ever wanted to impress friends at a dinner party with your cooking skills? Each session will focus on a different cuisine. Participants will be able see, smell, taste, ask questions about, and learn the background of the featured foods. Even if you have taken Chef Pina's classes before, different recipes are offered at each class. Whichever one-night cooking session you choose, you will enjoy a wonderful meal and great conversation. Bring your appetite and a container for leftovers.

Location Chef's Corner, 172 S. Circle Ave., Bloomingdale
Instructor Chef Pina
Fee \$54(R)/\$69(NR)
Min/Max 7/10

Code	Day	Date	Time	Cuisine
1060470	Fri	Jan 31	6-9 pm	Not Just Soup
1060471	Fri	Mar 21	6-9 pm	A Seafood Experience
4060472	Fri	Apr 18	6-9 pm	World Pizza
2060470	Fri	May 5	6-9 pm	BBQ & Summer Salads

Brunch & Mimosas (JN) ©

Ages 21+

Join us for a delightful Brunch & Mimosas event where great food meets sparkling cheer! This event is designed to offer a fun and enjoyable morning filled with delicious eats and refreshing drinks. Participants will partake in making a fabulous quiche, with French Bread, and a in season fruit salad all while having a mimosa, coffee, tea or juice.

Location Chef's Corner, 172 S. Circle Ave., Bloomingdale
Instructor Chef Pina
Fee \$54(R)/\$69(NR)
Min/Max 7/12

Code	Day	Date	Time
1060472	Sat	Mar 15	10 am-1 pm

Dinner Date Night (JN) ©

Ages 21+

Have a night away from home where you can make dinner together and not have to worry about the clean-up. Couples will take part in cooking a Mardi Gras themed cuisine. Couples will make Jambalaya, corn bread, and Beignets. Price is per couple.

Need a babysitter? For your convenience this class is paired with Parents Night Out

Location Chef's Corner, 172 S. Circle Ave., Bloomingdale
Instructor Chef Pina
Fee \$99(R)/\$114(NR)
Min/Max 7/12

Code	Day	Date	Time
1060473	Fri	Feb 21	6-9 pm

Follow Us



New! Stretch Infusion (JN)

Ages 18+

This class focuses on stretching with incorporation of Pilates, yoga, balance and ab workouts. At times, light weights or tubing will be used. For those participants who cannot get on the floor, chair or wall exercises will be utilized.

Location Connolly Recreation Center-Maple Room
Instructor Cathy Ventricelli
Drop In Fee \$5/class
Day Tuesdays
Time 6-6:45pm

Tai Chi – Meditation in Motion (JN)

Ages 21+

Often described as "Meditation in Motion", Tai Chi is a gentle, low-impact form of mind/body exercise with smooth, flowing movements that contain a surprising inner power to strengthen the body and mind while promoting better health and increased relaxation. Participants will learn the Tai Chi for Arthritis and Fall Prevention program developed by Dr. Paul Lam in Australia. Using the Sun Style of Tai Chi, it is designed to be safe and easy on the joints, improve balance and be easy to learn. This class is appropriate for adults and seniors who would like increased strength, coordination and flexibility, decreased joint pain, improved balance and posture, decreased stress and an increased sense of well-being. Tai Chi requires no special equipment and is generally performed standing. This program, however, can be done seated if needed for safety.

Location Connolly Recreation Center
Instructor Diana Nielsen (Certified Instructor)
Fee \$50(R)/\$65(NR)
Min/Max 6/10

Code	Day	Date	Time
1060701-01	Thu	Jan 9-Feb 13	6-7 pm
1060701-02	Thu	Feb 27-April 3	6-7 pm

New! Adult Beginner Pickleball (JN)

Ages 18+

This class is for those who have never played pickleball before or who have very limited experience with the sport. It will focus on pickleball basics such as forehand and backhand shots, serving, and court positioning. Players will also learn scoring and the rules of the game through drills and playing time. The slower pace of this class will give players the opportunity to develop the skills needed to play this fun and energetic game. All equipment will be provided.

Location Connolly Recreation Center Gym/Thorndale Park Tennis Courts
Instructor SportsKids Inc.
Fee \$78(R)/\$93(NR)
Min/Max 6/10

Code	Day	Date	Time
1060515-01	Tue	Jan 7-Feb 11	5-6 pm
1060515-02	Tue	Feb 18-Mar 25	5-6 pm

New! Adult Advanced Beginner Pickleball (JN)

Ages 18+

This class is for advancing beginners who have some experience and want to move at a faster pace to improve their basic shots and strategy. Players will participate in challenging drills to work on consistency in forehand and backhand shots, serving, volleying, dinks and lobs. Through matches played each week, players will get the chance to take their game to the next level by learning how to play smarter, not harder. All equipment will be provided.

Location Connolly Recreation Center Gym/Thorndale Park Tennis Courts
Instructor SportsKids Inc.
Fee \$78(R)/\$93(NR)
Min/Max 6/10

Code	Day	Date	Time
1060516-01	Tue	Jan 7-Feb 11	6-7 pm
1060516-02	Tue	Feb 18-Mar 25	6-7 pm



Energize and Uplift Yoga (JN) 

Ages 18+

Yoga teacher and Ayurvedic yoga specialist Julie M. Gentile brings you a new seasonal yoga class for winter. Ayurveda is yoga's sister science known as the "sacred knowledge of life." Learn energizing, uplifting practices to balance winter's cold and dense qualities. Please bring a water bottle and yoga mat to class. For virtual: A Zoom link to the class will be sent to the email address on file one hour before the first class.

Location JRC/Group X Room, 172 S Circle Ave, Bloomingdale
Instructor Julie Gentile, RYT 500
Fee \$96(R)/\$111(NR)
Drop In Fee \$13/class
Min/Max Min 5 participants

Code	Day	Date	Time
1060703	Mon	Jan 13-Mar 10	7:00-7:40 pm

No Class: Feb 3

Yoga for Self-Care (JN) 

Ages 18+

Yoga teacher and Ayurvedic yoga specialist Julie M. Gentile guides you through yoga poses, breathing exercises and meditation with an emphasis on self-care. All levels are welcome! Please bring a water bottle and yoga mat to class. For virtual: A Zoom link to the class will be sent to the email address on file one hour before the first class.

Location JRC/Group X Room, 172 S Circle Ave, Bloomingdale
Instructor Julie Gentile, RYT 500
Fee First Session Fee: \$112(R)/\$127(NR)
 Second Session Fee: \$126(R)/\$141(NR)
 Drop in Fee: \$15

Min/Max Min 5 participants

Code	Day	Date	Time
1060704	Wed	Jan 15-Mar 12	7-8 pm
2060704	Wed	Mar 26-May 21	7-8pm

No Class: Feb 5



Balance and Bloom Yoga (JN) 

Ages 18+

In this inspiring, energizing practice, yoga teacher and Ayurvedic yoga specialist Julie M. Gentile guides you to blossom into your highest potential. Ayurveda is yoga's sister science known as the "sacred knowledge of life." Learn yoga poses and breathing exercises to bring balance to your spring. Please bring a water bottle and yoga mat to class. For virtual: A Zoom link to the class will be sent to the email address on file one hour before the first class.

Location JRC/Group X Room, 172 S Circle Ave, Bloomingdale
Instructor Julie Gentile, RYT 500
Fee \$108(R)/\$123(NR)
Drop In Fee \$13
Min/Max Min 5 participants

Code	Day	Date	Time
2060703	Mon	Mar 24-May 19	7-7:40 pm

Meet the Teacher

Julie M. Gentile has been leading yoga classes since 2011. Her classes are infused with self-care practices from her award-winning books: 108 Yoga and Self-Care Practices for Busy Mamas and How to Stay Calm in Chaos: An Everyday Self-Care Guide; Stand Up for Your Self-Care YouTube Channel and blog; and Instagram and Facebook pages @JulieGtheYogi. Sign up for Nourish Note, her monthly self-care newsletter, at www.JulieGtheYogi.com.

Zumba® (JN)

Ages 18+

This one-hour energetic workout will have you sweating in no time. With Latin-based rhythms, motivating music, and easy-to-follow combinations, this total-body workout combines all elements of fitness - cardio, muscle conditioning, balance and flexibility, and boosted positive energy. Remember your water bottle, and come ready for a dance party!

Location Connolly Recreation Center-Walnut Room
Instructor Kimberly Black-Zumba® Basic 1 Certified
Fee \$15(R)/\$27(NR)
Drop-In Fee \$8 per class

Min/Max	8/15		
Code	Day	Date	Time
1060702-01	Mon	Nov 18-Dec 16	6:30-7:30 pm
1060702-02	Mon	Jan 6-Jan 27	6:30-7:30 pm
1060702-03	Mon	Feb 3-Feb 24	6:30-7:30 pm
2060702-01	Mon	Mar 3-Mar 24	6:30-7:30 pm
2060702-02	Mon	Mar 31-Apr 21	6:30-7:30 pm

Fitness Classes @ Roselle Park District (JN) 

Ages 18+

For a complete class description check out www.Medinahparks.org under online registration link.

Location See Below
Fee REGULAR FEE: \$34(R)/\$40(NR)
 SINGLE FEE: \$11(R)/\$13(NR)
Min/Max 4/15

Code	Day	Date	Time	Class
Location: 10 North Roselle Rd., Suite 2				
1060705-01	Mon	Jan 6-Jan 27	9:15-10:15 am	Pilates
1060705-02	Mon	Feb 3-Feb 24	9:15-10:15 am	Pilates
1060705-03	Mon	Mar 3-Mar 31	9:15-10:15 am	Pilates
2060705-01	Mon	Apr 7-Apr 28	9:15-10:15 am	Pilates
Location: 10 North Roselle Rd., Suite 1				
1060706-01	Tue	Jan 7-Jan 28	4:30-5:30 pm	Total Body Fitness
1060706-02	Tue	Feb 4-Feb 25	4:30-5:30 pm	Total Body Fitness
1060706-03	Tue	Mar 4-Mar 25	4:30-5:30 pm	Total Body Fitness
2060706-01	Tue	Apr 1-Apr 22	4:30-5:30 pm	Total Body Fitness
Location: 10 North Roselle Rd., Suite 2				
1060707-01	Wed	Jan 8-Jan 29	9:15-10:15 am	Get Fit Be Fab
1060707-02	Wed	Feb 5-Feb 26	9:15-10:15 am	Get Fit Be Fab
1060707-03	Wed	Mar 5-Mar 26	9:15-10:15 am	Get Fit Be Fab
2060707-01	Wed	Apr 2-Apr 23	9:15-10:15 am	Get Fit Be Fab
Location: 10 North Roselle Rd., Suite 1				
1060708-01	Thu	Jan 2-Jan 23	4:30-5:30 pm	Total Body Fitness
1060708-02	Thu	Feb 6-Feb 27	4:30-5:30 pm	Total Body Fitness
1060708-03	Thu	Mar 6-Mar 27	4:30-5:30 pm	Total Body Fitness
2060708-01	Thu	Apr 3-Apr 24	4:30-5:30 pm	Total Body Fitness
Location: 10 North Roselle Rd., Suite 2				
1060709-01	Fri	Jan 3-Jan 24	9:15-10:15 am	Pilates
1060709-02	Fri	Feb 7-Feb 28	9:15-10:15 am	Pilates
1060709-03	Fri	Mar 7-Mar 28	9:15-10:15 am	Pilates
2060709-01	Fri	Apr 4-Apr 25	9:15-10:15 am	Pilates



Branson Show Extravaganza Extended Trip (JN)

Ages 18+

- Transportation in a top-quality motorcoach with at least 54 seats that is restroom and video equipped.
- 4 nights lodging in the Branson area
- 8 meals: 4 breakfasts and 4 dinners
- Admission to 6 Fabulous Shows! Including:
- Three Morning Shows: JERSEY NIGHTS SHOW, DOUG GABRIEL MORNING SHOW & BEACH BOYS: CALIFORNIA DREAMIN'
- Three Evening Shows: THE HAYGOODS SHOW, EDGE OF ILLUSION featuring REZA & HUGHES MUSIC SHOW

Sign up now and pay a \$75 deposit to hold your spot. The deposit is refundable until December 20th, 2024. A \$75 deposit is due upon registration and is non-refundable after December 20th. Final payment is due February 14th, 2025. A detailed itinerary is available three weeks before the trip at the Medinah Park District front desk. Trip cancellation insurance is available and encouraged to offer protection should participants need to cancel after the final payment date. Information on the insurance will be distributed along with the detailed itinerary at the Medinah Park District front desk. Diamond Tours, Inc greets the group at various destinations and then proceeds with guiding the tours. A Park District representative assists in managing the trip. You may purchase travel insurance at www.travelconfident.com.



Departure Location Medinah Park District, 22w130 Thorndale Ave., Medinah
Min/Max 10/13 per district

Code	Day	Date	Departure Time	Fee
2060801-01	M-F	Apr 21-Apr 25	8 am	Single \$934(R)/\$964(NR)
2060801-02	M-F	Apr 21-Apr 25	8 am	Double \$779(R)/\$809(NR)
2060801-03	M-F	Apr 21-Apr 25	8 am	Triple \$759(R)/\$789(NR)

Registration deadline: Feb 14, 2025

Blackhawks Game (JN)

Ages 18+

Get ready for an unforgettable night of hockey action as we head over to the United Center to cheer on the Chicago Blackhawks! Whether you're a die-hard Blackhawks fan or just looking for a night out, come be a part of great company, a memory making experience.

Location Chicago, IL
Fee \$90(R)/\$95(NR)
Min/Max 2/6
Departure Location Clauss Recreation Center, 555 W Bryn Mawr Ave., Roselle

Code	Day	Date	Time
1060801	Wed	Jan 8	4-10 pm

Registration deadline: Dec 16

Brookfield Zoo (JN)

Ages 18+

Stroll the beautiful grounds of Brookfield Zoo that covers over 200 acres and is home to more than 450 species of animals. The cost will include transportation and parking fees. You may bring a lunch or get a bite at one of the available eateries.

Location Brookfield Zoo, 8400 W 31st, Brookfield, IL
Fee \$30(R)/\$35(NR)
Min/Max 4/4
Departure Location Medinah Park District, 22w130 Thorndale Ave., Medinah

Code	Day	Date	Time
2060802	Thu	Apr 17	10 am-4 pm

Registration deadline: Apr 12

Hollywood Casino Aurora (JN)

Ages 21+

Want to try your luck? Join us as we head to Hollywood Casino in Aurora. Trip includes transportation. Lunch is on your own at one of the restaurants in the Casino. Registration deadline is April 21. Trip departs from and returns to the Johnston Recreation Center, 172 S. Circle Ave., in Bloomingdale.

Location Aurora, IL
Fee \$12(R)/\$17(NR)
Min/Max 4/4
Departure Location Johnston Rec Center, Bloomingdale

Code	Day	Date	Time
2060803	Tue	Apr 29	9 am-2 pm

Registration deadline: Apr 21

Anderson Japanese Gardens (JN)

Ages 18+

Come along to check out one of the most decorated Japanese gardens in the North America region not too far from your backyard. Anderson Gardens has an abundance of streams, waterfalls and koi ponds to check out as well as a wonderful dining area called Fresco at the Gardens.

Location 318 Spring Creek Road, Rockford
Fee \$25(R)/\$30(NR)
Min/Max 4/4
Departure Location Medinah Park District, 22w130 Thorndale Ave., Medinah

Code	Day	Date	Time
2060804	Thu	May 8	10 am-4 pm

Registration deadline: May 6

Paramount Theater (JN)

Ages 18+

Get ready for an unforgettable day of music, laughter and heartfelt storytelling as we embark on a trip to the musical Waitress. Waitress follows the journey of Jenna, a talented baker stuck in a small town and a loveless marriage, who dreams of a better life. With humor and a little help from her friends, she bakes her way to a brighter future. Participants will travel together. Come join us on a fun theater experience.

Location Aurora, IL
Fee \$65(R)/\$75(NR)
Min/Max 2/4
Departure Location Clauss Recreation Center, 555 W Bryn Mawr Ave., Roselle

Code	Day	Date	Time
1060802	Thu	Feb 20	7-11 pm

Registration deadline: Jan 31

Chicago Premium Outlets (JN)

Ages 18+

Love to shop? Spend the afternoon at the Chicago Premium Outlets in Aurora. The outlet mall is home to more than 140 stores including Adidas, Ann Taylor, Coach, Clarks, Kate Spade and more. Shoppers can also find a variety of quick-service food options. The trip departs and returns from the Bloomingdale Park District, 172 South Circle Avenue in Bloomingdale. Fee includes transportation. Lunch and shopping are on your own.

Location Aurora, IL
Fee \$12(R)/\$17(NR)
Min/Max 4/4
Departure Location Johnston Rec Center, Bloomingdale

Code	Day	Date	Time
2060805	Thu	May 29	9 am-2 pm

Registration deadline: May 15

Attention Trip Participants!

Did you ever wonder why your favorite trip gets cancelled? Each trip requires careful planning and sometimes this means that deadline dates for final counts are 3-6 weeks before a scheduled trip. If the participant count is not high enough by the deadline date, we must cancel or forfeit our deposit. For this reason, we suggest that if you see a trip that strikes your interest, sign up for it as soon as possible. This will ensure the participant count is high enough to keep the trip going.

All trip return times are approximate. Transportation is provided by the Medinah, Roselle or Bloomingdale Park District mini bus unless otherwise noted. The buses are air-conditioned and provide accessible seating options for our handicapped participants. Refunds requested after the registration deadline will not be granted unless the trip registrant's spot can be filled.

We attempt to give you as much information as possible regarding the amount of walking required during each trip. The symbols will allow you to make a more informed decision regarding trip registration.

Walking Symbols

- 1 = Average walking
- 2 = Moderate walking
- 3 = Heavy walking

The footprint symbols indicate the amount of walking for each outing.

Membership Special Offer

Join in January and receive your annual fitness membership for \$120! That's only \$10/month!

Fitness Center Hours

Regular Hours

Monday-Thursday: 7 am-9 pm
 Friday: 7 am-8 pm
 Saturday: 7 am-12 pm
 Sunday: Closed

Fitness Center Closed

Dec 25, Jan 1, May 26

Annual Membership Benefits

- Cardio and Strength Training Equipment
- Fitness Center Orientation (upon request)
- Basketball & Pickleball Open Gyms
- Locker Room Facilities
- Two Guest Passes Per Year



Fitness Center (JN)

The Medinah Park District's Fitness Center is dedicated to fitness excellence with quality equipment and programs designed to offer the best value. Whether your goals are to increase overall fitness, lose weight or take on an extra challenge, we are here to provide the equipment and personnel to help you achieve those goals.

Individuals and families may join the Fitness Center on an annual or 3-month basis, or may pay a daily fee to use the facility.

We offer cardiovascular and strength equipment, personalized orientations upon request, open gym options and locker room and shower facilities.

All individuals utilizing the fitness center must wear shirts and shoes at all times. Please be sure to bring separate work out shoes for the fitness center so dirt and other debris are not tracked in. Individuals under the age of 18 must have a parent or guardian signature on the fitness center waiver in order to utilize the facility. Facility closure due to maintenance and/or special events is considered in the fee schedule.

Join the Fitness Center and get started on a healthy future!

Medinah Park District Fitness Center Membership Pricing

Annual Membership	Rates		Renewal Rates*	
	Resident	Non-Resident	Resident	Non-Resident
Individual Adult (22-54)	\$150	\$165	\$130	\$145
Individual Senior (55+)	\$100	\$115	\$ 80	\$ 95
Household (3+ in same home)	\$320	\$335	\$300	\$315
Student (14-21 years)*	\$110	\$125	\$ 90	\$105
3 Month Membership	\$ 50	\$ 65		
Daily Rate**	\$ 5	\$ 7		
Large Locker Rental***	\$75/year	\$25 for 3 months	\$10 for 1 month	
Small Locker Rental***	\$40/year	\$12 for 3 months	\$5 for 1 month	

***In order to take advantage of the discounted renewal fee, members need to renew prior to their expiration date.**

Please inquire with front desk about Military or Corporate Memberships.

ID Cards – All members will be issued a Fitness Center identification card. This will need to be presented prior to entering the fitness center. There is a \$5 replacement fee if card is lost.

Proof of residency will be required to receive resident rates. Active or retired vets must show proof to receive military membership.

**All daily fee users must be 14 years and older and have a waiver signed by a guardian 18 years or older each visit. Daily fees are paid at the front desk.

***Daily use of locker is available at no charge. Please bring your own lock and remove it when you leave the building. Medinah Park District is not responsible for lost or stolen items.

Medinah Park District Fitness Center Equipment

Cardiovascular

- Life Fitness Treadmills
- Life Fitness Ellipticals
- Life Fitness Recumbent Bike
- True Fitness Functional Trainer
- Upright Bike
- Matrix Spin Bike
- Body Craft Elliptical
- Body Craft Rower

Strength

- Bench/Shoulder Press
- Lat Pulldown/Low Row
- Arm Curl/Tricep Extension
- Leg Extension/Leg Curl
- Leg Press/Calf Press
- Dumbbells (5 lb-50 lbs)
- Hammer Abdominal Board
- Hammer Body Weight Back Extension



Open Gym (JN)

Monthly Open Gym schedules are available online at www.Medinahparks.org

Open Gym Daily Fees: \$4/day – Residents
 \$6/day – Non-Residents

Open Gym Annual Membership Pass

An open gym annual membership pass allows a participant to use the gym during set open gym times for no additional fee. Passes are valid one year from the date of purchase.

FEES	Residents	Non-Residents
Youth Ages 6-17	\$70	\$85
Adult (18+)	\$80	\$95

Pass must be presented upon entering facility.

Open Gym Rules

- All participants must sign in and fill out required information completely (clearly and legibly) before beginning play.
- **Your open gym pass must be presented in order to participate.**
- Participants under the age of 18, parents must accompany you to obtain annual membership pass.
- There is a \$5 replacement fee if pass is lost.
- Players must wear appropriate gym shoes.
 - Players must demonstrate good sportsmanship.
 - Offensive language will not be tolerated.
 - Absolutely no gum or food in the gym.

Open Gym schedules will be posted on a monthly basis online and at the Connolly Recreation Center.

Additional Open Gym guidelines are posted in our facility, as well as on our website at www.Medinahparks.org.

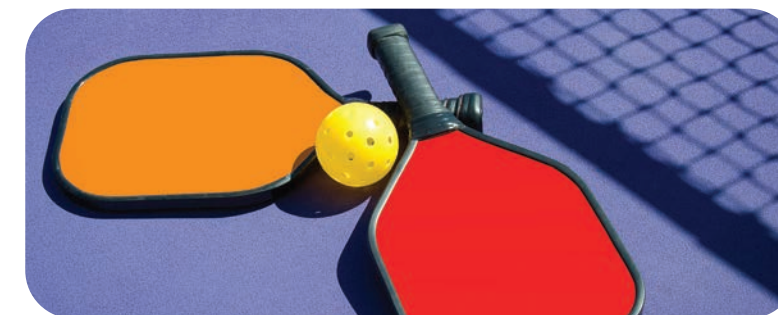
Pickleball Open Gym (JN)

Ages 18+

Pickleball is a racquet sport that combines elements of badminton, tennis and table tennis. It is played with a hard paddle and a wiffle ball on a court with the same dimensions as a doubles badminton court. The net is similar to a tennis net; however, it is two inches lower. Bring out a group of friends and give this addictive game a try! Equipment is provided. For more information about Pickleball and its rules, visit usapa.org.

Location Fee Connolly Recreation Center-Gym
 \$3 drop in rate
 \$100 annual rate

Day Time
 Tue/Thu 9 am-12 pm
 Wed 9 am-11 am





NEDSRA is a proud service of the **Medinah Park District**. Through our partnership, individuals with a disability are offered over 600 recreational opportunities each year. If you or someone you know has a disability contact NEDSRA today! All ages and ability levels are welcomed!

AVAILABLE NOW!

WINTER/SPRING 2025



- SPECIAL OLYMPICS
- SOCIAL CLUBS
- FITNESS PROGRAMS
- SENSORY PROGRAMS
- PROGRAMS FOR VETERANS



- OVERNIGHT TRIPS
- CAMPS
- ADULT DAY PROGRAM
- COMMUNITY EVENTS
- & MUCH MORE!

1770 W. Centennial Place
Addison, IL 60101

FOLLOW US!

630.620.4500
nedsra.org

Co-operative Programs

The Medinah Park District co-ops with the following leisure service agencies to provide program opportunities for you and your family: Addison Park District, Bloomingdale Park District, Itasca Park District, Roselle Park District and the Wood Dale Park District.

Employment Opportunities

The Medinah Park District offers a variety of part-time and seasonal positions. Individuals who are friendly, hardworking and dedicated to doing a good job are desired. You must be age 16 years or older to be considered for a position. Due to the many applications received and the limited number of positions, the District will only contact those being considered for a position. Please also consider volunteering with the Park District if not hired for a position. The Medinah Park District is an equal opportunity employer.

Insurance Disclaimer

The Medinah Park District is committed to conducting its recreational programs and services in the safest manner possible and holds the safety of participants in the highest regard. Participants and parents registering their child in recreational programs must recognize, however, that there is an inherent risk of injury when choosing to participate in activities.

Please recognize that the Medinah Park District does not carry medical accident insurance for injuries sustained in its programs. The cost of such would make program fees prohibitive; therefore, each person registering themselves or a family member for a recreational program/activity should review their own medical insurance policy for coverage. It must also be noted that the absence of medical insurance coverage does not make the Medinah Park District automatically responsible for the payment of medical expenses. The Medinah Park District requires that all program participants or legal guardians sign a Liability Waiver and Release form at the time of registration.

Program Guide Changes/ Errors Disclaimer

Due to the large amount of information available in the Medinah Park District program guide, errors and changes before and after publication may occur. While we attempt to locate and fix all errors in the proofing process, some items are missed. We apologize for any errors that may occur and will attempt to advise you of any changes as quickly as possible. Please check online for updated information.

Program Cancellations

Programs that do not reach the advertised minimum registration number at least one week prior to the start of the program may be cancelled due to low enrollment. Participants will be notified of the cancellation as soon as possible. Full refunds will be issued for programs cancelled due to low enrollment. If a program has an advertised deadline date listed in the brochure description, the program will be cancelled after that date if minimum registration has not been reached.

Americans with Disabilities Act

The Medinah Park District is committed to accessibility for individuals with disabilities and strives to provide equal, integrated participation in all programs, services and activities. The park district's policy is to reasonably accommodate all qualified program applicants in accordance with the Americans with Disabilities Act (ADA). We welcome questions, comments and concerns of interested community members regarding district ADA compliance.

To arrange for auxiliary aids or accommodations enabling individuals with disabilities to participate in park district public meetings, or to request publications in a special format (audiocassette, large print) please call 630-893-2560 or write to 22W130 Thorndale Avenue, Medinah, IL 60157.

Parking for PreK/K, 1st/2nd Grade Soccer Field, T-ball Field

Park District PreK/K, 1st/2nd Grade Soccer and T-ball program participants and spectators should park in the Medinah Intermediate School parking lots located at the corner of Medinah Road and Thorndale Avenue. The lots provide for a short walk to the school athletic fields. These lots are located apart from the main parking lots at Thorndale Park/Connolly Recreation Center.

Visit Our Website

The Medinah Park District's website can be located at www.medinahparks.org. You can peruse programs, register online, review Board of Commissioners meeting minutes and agendas, download a printable registration form, find an application for employment or view our site and stay informed. If you have suggestions or ideas for our website, please contact us at 630-893-2560.

Say Cheese!

Photos and video of participants in programs or special events and users of District facilities or parks are used in publicizing and promoting the District. All persons registering for District programs and activities or using District property thereby agree that any photograph or video recording taken by the District may be used by the District for promotional purposes. Please tell an instructor or photographer if you do not want to be photographed or video recorded.

Athletic Field Conditions

Home game field conditions and updates for youth soccer, and baseball/softball can be attained by checking the Park District's website at www.medinahparks.org. Please check with your coach about practice and away game cancellations.

Inclusive Recreation Programs

In a continuing effort to meet the needs of residents with special needs, NEDSRA (see page 40) and the Medinah Park District provide inclusive recreation services. This means that individuals with disabilities can participate in programs offered by the park district. This inclusive recreation environment provides residents with disabilities greater choices for their leisure time and allows all residents to learn about one another as they participate together. Let the park district and NEDSRA know of your special needs and interests so that we can provide the support necessary for successful inclusion. By communicating your needs, the park district and NEDSRA can be prepared to provide you with appropriate services.



Registration

3 Easy and Convenient Ways to Register

- On-Line** Register via <https://apm.activecommunities.com/medinahparkdistrict>
- Walk-In** You may bring your registration form directly to the Registration counter at the Connolly Recreation Center, 22W130 Thorndale Avenue.
- Mail-In** You may mail your registration form to the Medinah Park District, 22W130 Thorndale Avenue, Medinah, IL 60157.

Registration Hours

Walk-In program registration will be accepted during regular Connolly Recreation Center building hours of 7:00 am-9:00 pm Monday-Thursday, 7:00 am-8:00 pm on Friday, 7:30 am-12:00 pm on Saturday.

Medinah Park District residents receive preference during program enrollment periods and may register for programs beginning December 2. Registration is taken on a first come, first serve basis.

Resident Registration: December 2 Non-Residents: December 9

Non-resident registration rates are 1.75 times the resident fee with the additional fee not to exceed \$15.

All registration fees must be paid at the time of registration unless noted otherwise. Persons enrolling after the start date of a program will be required to pay the entire program fee. Pro-rating of program fees will not be accepted.

Are You a Resident?

The Medinah Park District has definitive boundaries that take in parts of Roselle (zip code 60172), Itasca (zip code 60143) and Medinah (zip code 60157). In fact, you may be a resident of the Medinah Park District and your neighbor next to you or across the street from you may not be residents of the park district.

Why is this important? Medinah Park District residents support the district by paying property taxes to the district while non-residents do not. Residents are thus afforded special privileges and benefits.

How do you know if you are a resident? If you are a property owner, look at a copy of your most recent tax bill. If the Medinah Park District is listed, you are a resident. If you rent, call us at 630-893-2560 and give us your address; we will be able to tell you if you are a resident or not.

What about those privileges and benefits? To begin, residents receive the first opportunity to register for our seasonal program offerings. Secondly, residents who register for our programs and services are charged a lower user fee than non-residents. Residents are also charged less for facility rentals. This is because residents pay taxes that support our Park District and in return we offer lower fees for services.

Registration Fees

Cash, personal checks, money orders and VISA, MASTERCARD or DISCOVER CARD may be used to pay for Park District registration fees, membership fees or services. Checks and money orders must be made payable to the Medinah Park District.

Class Cancellation/Changes

Most programs have a minimum and maximum number of openings. If your class is cancelled due to low enrollment, the park district will make every attempt to offer an alternative class when available or credit a family account or provide a full refund. Class decisions about cancellations are usually made seven days in advance. Please be aware that certain programs have special registration deadlines that will be listed if different than the general seven day period.

Once programs begin, individual classes may change or be cancelled due to weather and/or the instructor being ill. Every attempt will be made to make up the class; however, we cannot guarantee this as there are other programs that may conflict with us being able to provide a makeup time. Unfortunately, refunds cannot be issued if this happens.

Minimums and Maximums

A class minimum is established to make sure that a program has enough registration support to justify holding the program. Since most instructors are paid per class period, running classes with less than the minimum of registrants would be a drain on the financial network of the Park District. A vast majority of our recreation programs are self-sufficient. If a class does not meet the minimum number of participants, it may be cancelled. In these cases, registrants will be notified. Please see Program Cancellations on our General Information page.

Maximum numbers are established to maintain the safety and quality of a program. We keep student/instructor ratios low to insure you get what you pay for; a higher quality program. Room capacity and ratios are primary considerations for the maximum number listed.

Waiver Forms Required

A signature is required on the waiver portion of all registrations. Please read the waiver in full before signing. Registrations cannot be processed without the waiver signed.

Return Check Policy

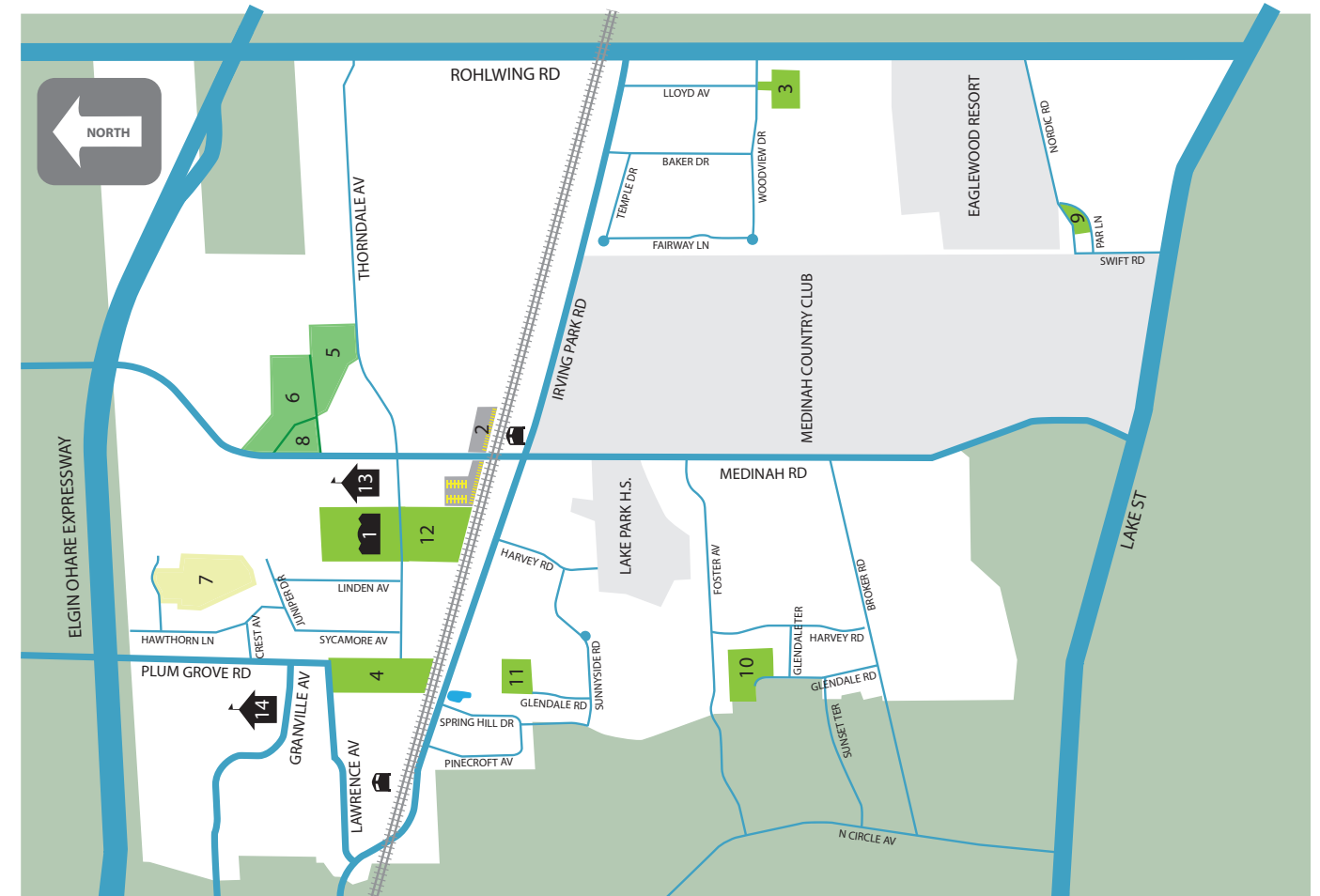
We gladly accept personal checks as payment for registration fees. If, for any reason, a check is returned to our office marked "NSF" we will contact you. You will be required to submit a full cash payment, as well as the current bank service charge, in order to maintain your registration in your particular program of interest. Class privileges will be suspended and new registration will not be accepted until payment is received.

Refund Policy

Refunds for programs will not be made once a program has begun unless the program is cancelled by the Park District, the participant moves from the district or the participant provides a medical document from his/her physician. Trip refunds will not be made after the registration deadline unless the ticket can be resold.

An administrative fee of \$5.00 will be charged for any refund request except when a program is cancelled by the Medinah Park District. In addition, a refund will be prorated if any classes were attended. Refunds can take up to 4 weeks to process.

	Rentals	Playground	Trails	Ball Fields	Tennis Courts/Pickleball	Soccer Fields	Sled Hill	Ice Skating	Sand Volleyball	Basketball Courts	Shelter	Picnic Tables	Nature Area	Restrooms	Parking Lot	Pond	Acres
Facilities																	
1.....Connolly Recreation Center	x									x				x	x		
2.....Commuter Parking Lots															x		
Park Sites																	
3..... Goodenough Park (Lloyd & Woodview)		x	x		1/1					x							3.5
4.....Manary Park (Lawrence & Plum Grove)	x	x	x	1		1					x	x			x	x	12
5.....Meacham Creek Park (Thorndale Ave.)			x									x	x		x		12
6..... Meacham Wildlife Preserve (Medinah Rd)													x				16
7..... Michaels/McClure Wetland													x				15
8.....Natasha Brandt Nature Preserve													x				4
9..... Nordic Park (Fairway and Nordic)		x			2						x				x		2.5
10..... Riha Park (Glendale..N of Sunset)	x	x	x	1		x					x	x			x	x	7
11.. Springhill Park (Glendale – N of Sunnyside)	x	x		1/1							x	x			x		3
12..... Thorndale Park (Thorndale Ave.) *lighted	x	2	x	5/*2	*4		x	x	x		x	x		x	x		30
School Sites																	
13...Medinah Intermediate School (Medinah Rd.)		x		2		x									x		
14..... Medinah Middle School (Granville Ave.)															x		



MEDINAH PARK DISTRICT
22W130 Thorndale Avenue
Medinah, IL 60157

PRE-SORT STANDARD
U.S. POSTAGE
PAID
MEDINAH, IL
Permit No. 5

A Green Lifestyle
Begins With The Irish



***Flood
Brothers*** 



DISPOSAL/RECYCLING SERVICES

Servicing Businesses and Residents
of Cook, DuPage, Kane, Kendall, Lake
McHenry and Will Counties

www.floodbrothersdisposal.com
630.261.0400
773.626.5800

17 W 609 14th St
Oakbrook Terrace, IL 60181



#FloodBrothersDisposal